



Lawrence Church Road

Lawrence Church Rd. is a 133± acre property located in Southern Bulloch Co. The tract is made up of a mixture of hardwoods and pines with good roads throughout the majority of the property; making it an ideal place for hunting, ATV riding, or a future home site. Located about 40 minutes away from Savannah and about 20 minutes from Statesboro. Whether you're looking for a recreational tract or a place to call home this property is ready for you! Call Jason Williams today to see this property! 912.764.LAND(5263)



Price: \$519,000

Property Type: Land

Status: Sold

Street/Address: Lawrence Church Rd

City: Pembroke

State: Georgia

Zip code: 31321

County: bulloch

Acreage: 133

Per Acre Price: \$3,900.00

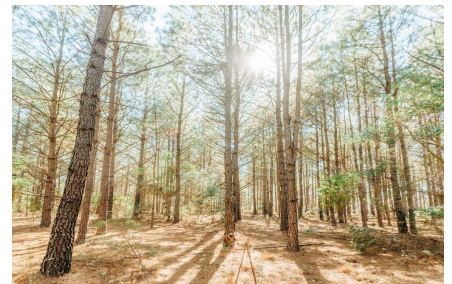
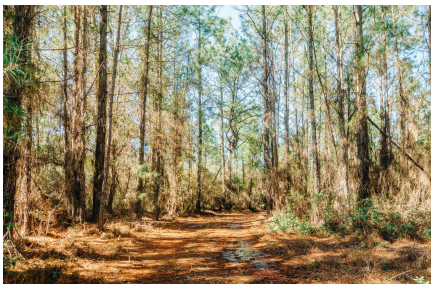
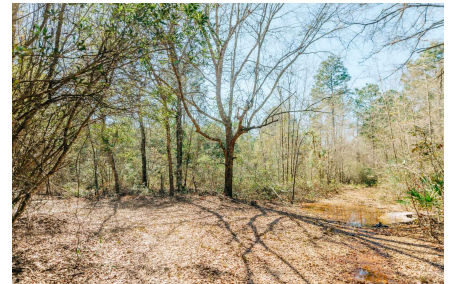
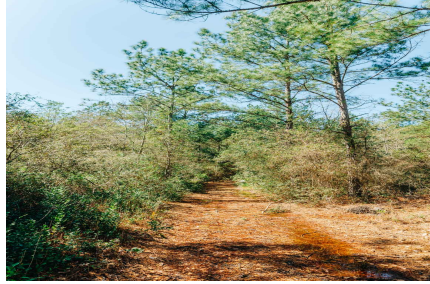
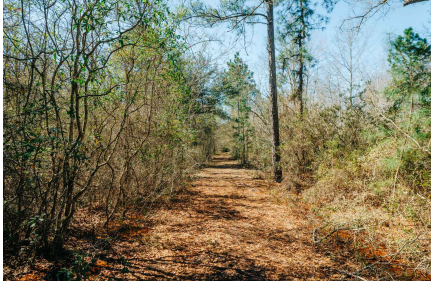
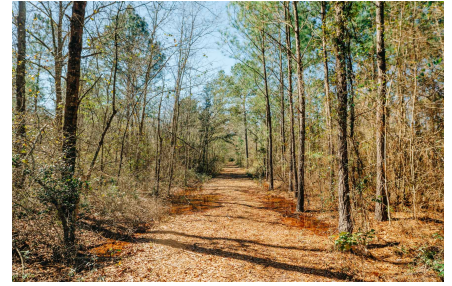
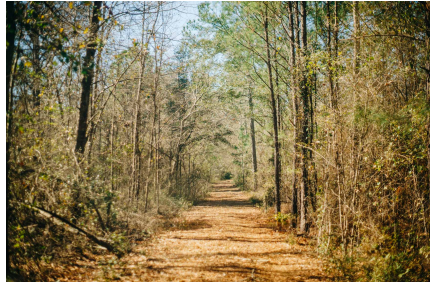
Phone Number: 912.764.LAND(5263)

Email: info@LandandRivers.com

Google Maps link: [View Larger Map](#)

Lawrence Church Road

Published on Plantation Properties & Land Investments, LLC (<https://www.landanddrivers.com>)



Aerial Map

Lawrence Church Road

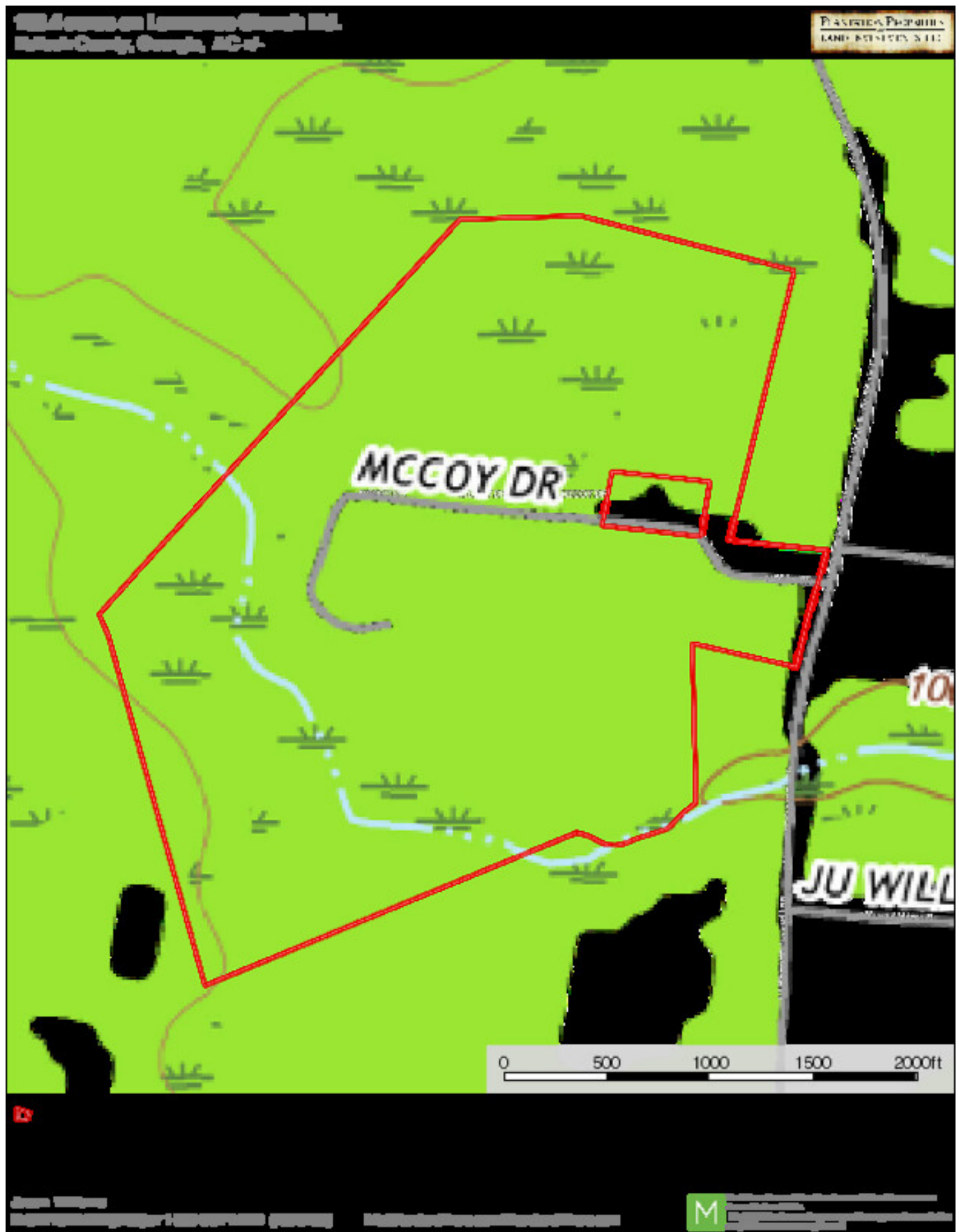
Published on Plantation Properties & Land Investments, LLC (<https://www.landanddrivers.com>)



Topo map

Lawrence Church Road

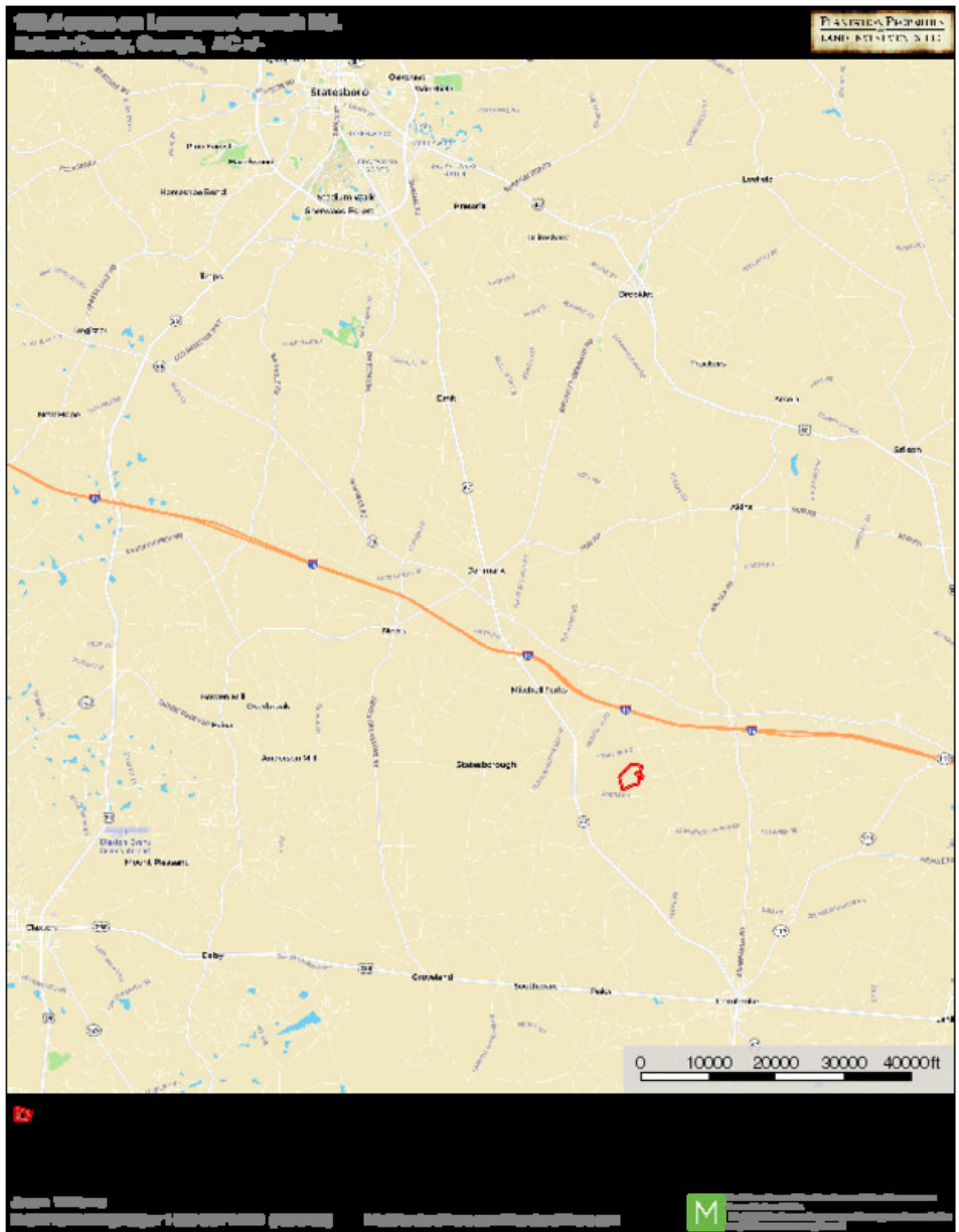
Published on Plantation Properties & Land Investments, LLC (<https://www.landanddrivers.com>)



Location Map

Lawrence Church Road

Published on Plantation Properties & Land Investments, LLC (<https://www.landanddrivers.com>)



Source URL: <https://www.landanddrivers.com/property/lawrence-church-road>