



Coursey Tract B

PRICE REDUCED!!! 123± acres of land great for hunting and recreation. This property was clear cut approximately 1.5-2 years ago and was not replanted. Road frontage on John Coursey Rd., Seed Tick Rd. & Hwy 119. Conveniently located just 2 miles off of I-16 and only 30 miles from Savannah and Statesboro. Call today for more information (912) 764-LAND (5263)



Price: \$221,400

Property Type: Land

Status: Sold

Street/Address: John Coursey Rd

City: Ellabell

State: Georgia

Zip code: 31308

County: bulloch

Acreage: 123

Per Acre Price: \$1,800.00

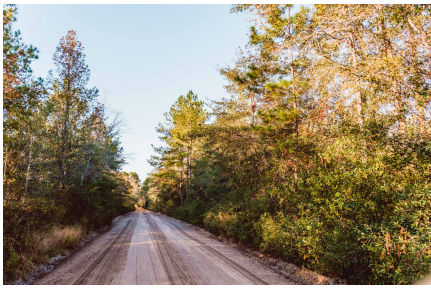
Phone Number: 912.764.LAND(5263)

Email: info@LandandRivers.com

Google Maps link: [View Larger Map](#)

Coursey Tract B

Published on Plantation Properties & Land Investments, LLC (<https://www.landanddrivers.com>)



Location Map



Coursey Tract B

Published on Plantation Properties & Land Investments, LLC (<https://www.landanddrivers.com>)

Aerial Map

123+/- acres John Coursey Rd. & Seed Tick Rd.
Bulloch County, Georgia. AC +/-

PLANTATION PROPERTIES
LAND INVESTMENTS, LLC



mapbox

Tracy

Jason Williams
P: 912-334-1AND(5263) or 1-800-303-1AND (3468-4263)

<https://www.landanddrivers.com>

M The information provided on this website is for informational purposes only and is not intended to be used as a basis for any investment decision. The information is not a recommendation, offer, or solicitation of any kind.

Coursey Tract B

Published on Plantation Properties & Land Investments, LLC (<https://www.landanddrivers.com>)

Topo Map



Source URL: <https://www.landanddrivers.com/property/coursey-tract-b>