



## Watson Road Farm

Exceptional Recreation and Timber Investment property; 226± acres located on Watson Rd in Candler County, GA., near I-16. This well-kept property features 170± acres of mature pine timber, a newly rebuilt and stocked pond at the front of the property with great house/cabin sites and available power and broadband service and a small wet weather pond located at the back that would be great for duck hunting. Two entrances lead you to an excellent interior road system allowing easy access to the entire property! This is a nice tract with ample opportunity to enjoy the outdoors (plenty of deer and other wildlife) and a good land investment. Located near small, quaint town of Metter, only 20 minutes from Statesboro, GA, 1 hour from Savannah, 2 hours from Macon, 3-4 hours from Atlanta area, and less than 3 hours from Jacksonville. Call today to schedule a tour! 912.764.LAND(5263)



**Price:** \$748,500

**Property Type:** Land

**Status:** Sold

**Street/Address:** Watson Rd.

**City:** Metter

**State:** Georgia

**Zip code:** 30439

**County:** candler

**Acreage:** 226

**Per Acre Price:** \$3,300.00

**Phone Number:** 912.764.LAND(5263)

**Email:** [info@LandandRivers.com](mailto:info@LandandRivers.com)

**Google Maps link:** [View Larger Map](#)



## Watson Road Farm

Published on Plantation Properties & Land Investments, LLC (<https://www.landanddrivers.com>)

---



## Aerial Map



## Watson Road Farm

Published on Plantation Properties & Land Investments, LLC (<https://www.landanddrivers.com>)

226+/- acres on Watson Rd.  
Candler County, Georgia, 226.82 AC +/-



Boundary

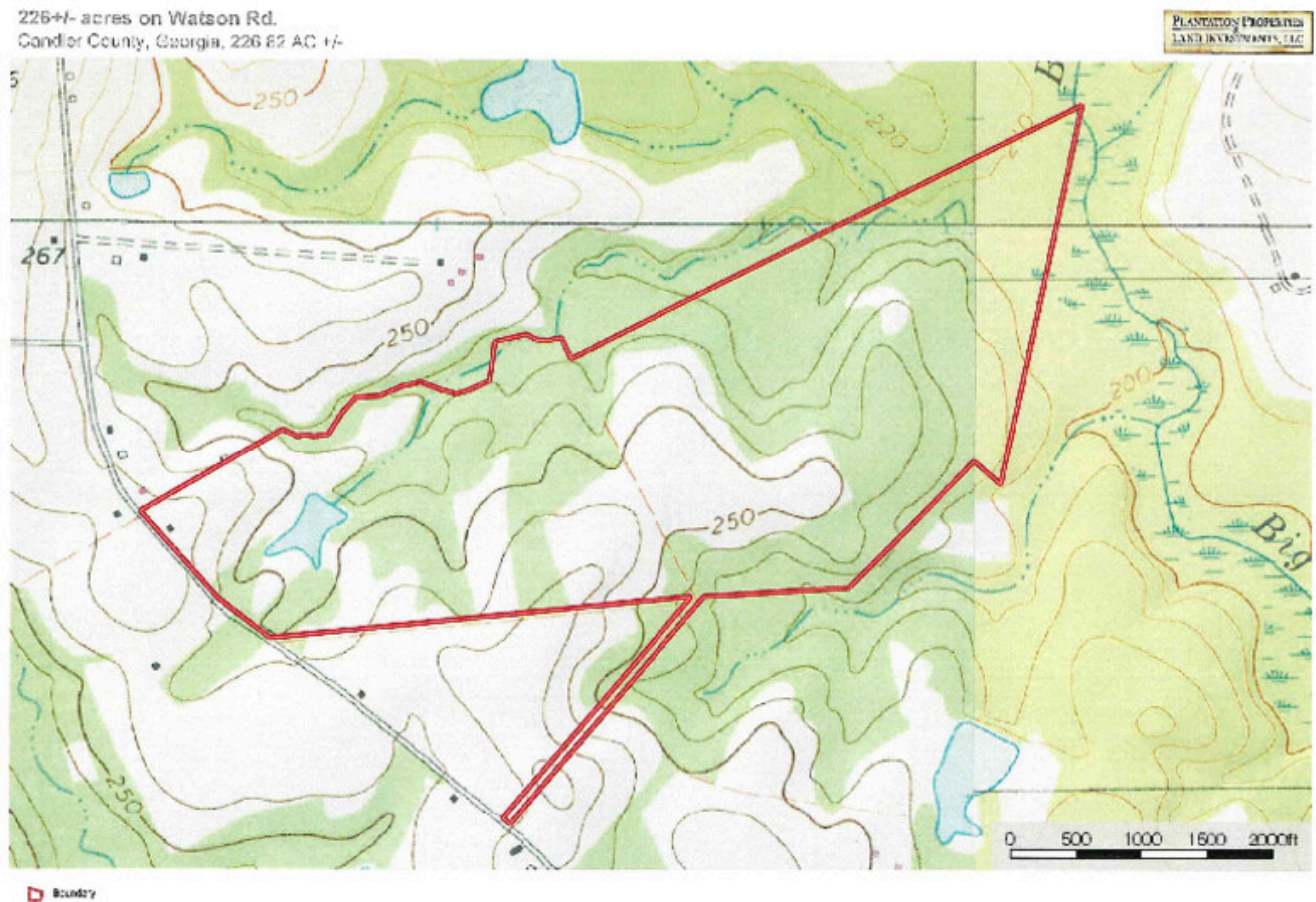
Jason Williams  
P: 912-764-LAND (5263) or 1-800-GOT-LAND (438-5563) | [info@landanddrivers.com](mailto:info@landanddrivers.com) | [LandandDrivers.com](https://www.LandandDrivers.com)

**M** All information is provided for informational purposes only. It is not intended to constitute an offer or solicitation of any financial product or service. Please consult your broker or advisor for more information.

## Topo Map

## Watson Road Farm

Published on Plantation Properties & Land Investments, LLC (<https://www.landanddrivers.com>)



Jason Williams  
P: 912.754.1740 | 2025 or 1.305.601.7440 | 908.12552  
[info@landanddrivers.com](mailto:info@landanddrivers.com) | [London@95cm.com](http://London@95cm.com)

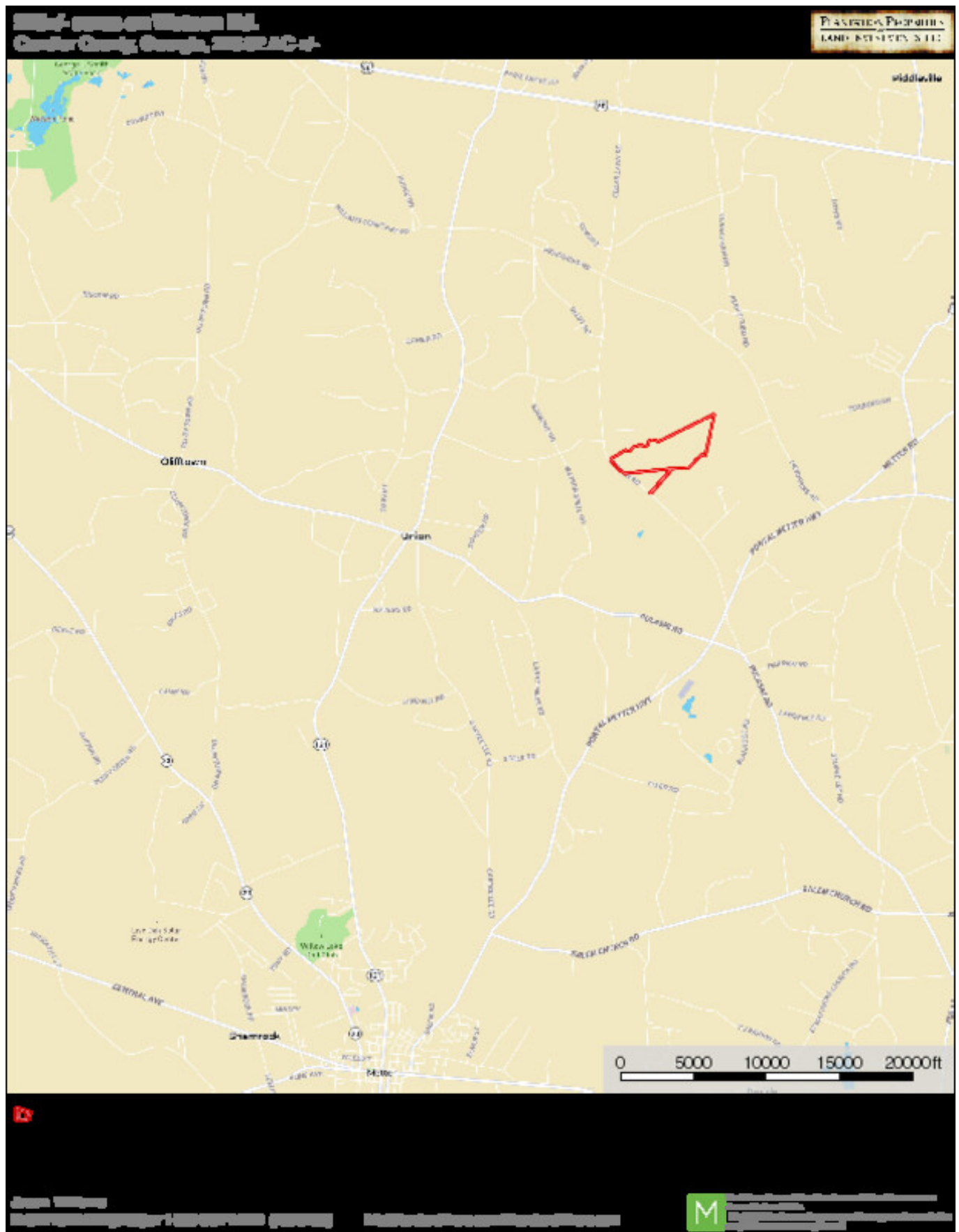
**M** We strive to provide the best service and information to our clients. We are committed to providing the highest quality service and information to our clients.

## Location Map



# Watson Road Farm

Published on Plantation Properties & Land Investments, LLC (<https://www.landanddrivers.com>)

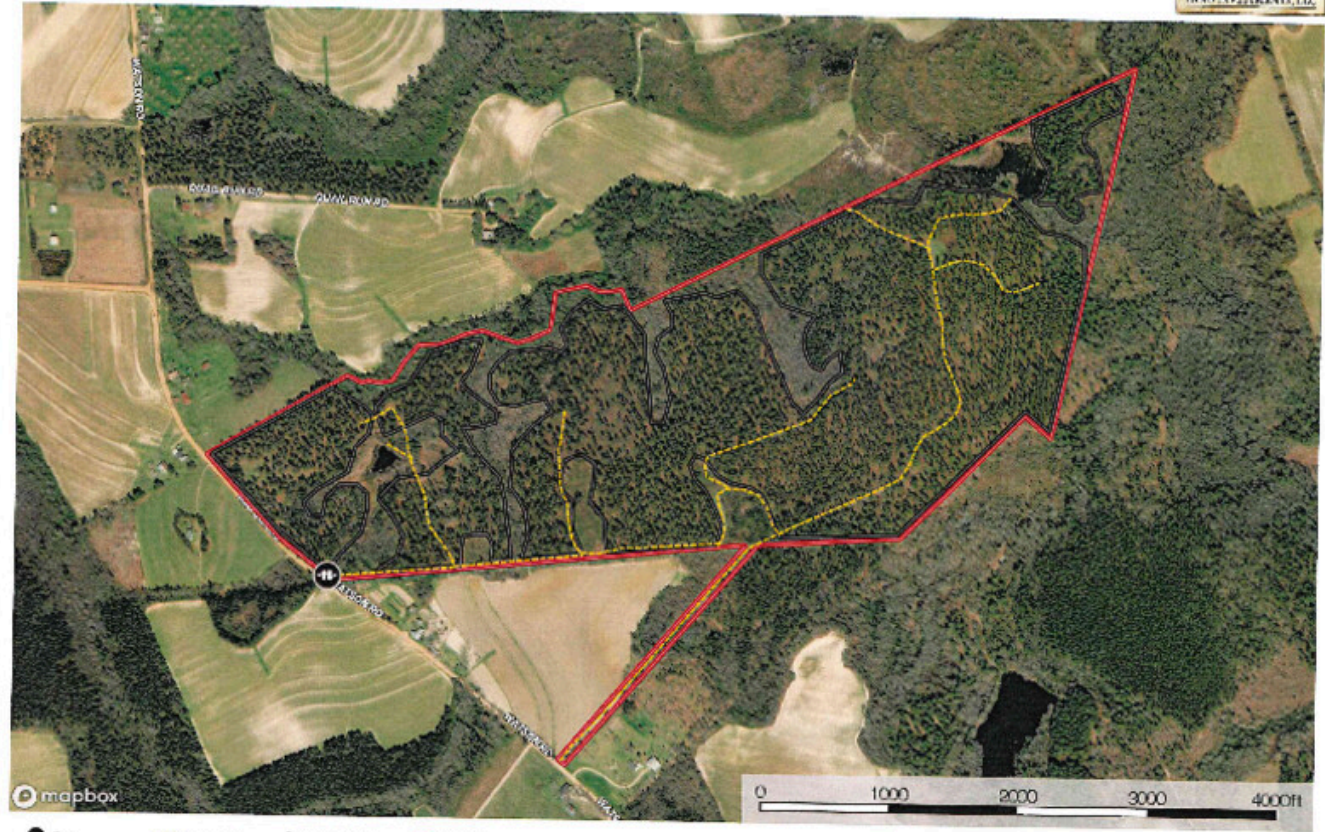


## Detailed Aerial

## Watson Road Farm

Published on Plantation Properties & Land Investments, LLC (<https://www.landandrivers.com>)

226+/- acres on Watson Rd. - Detailed Aerial  
Candler County, Georgia, 226.82 AC +/-



Jason Williams  
PH: 13-794-LAND(5202) or 1-823-GOT...AM: 169-5263 | [info@landandrivers.com](mailto:info@landandrivers.com) | [LandonRivers.com](http://LandonRivers.com)

**M** The Candler County, Georgia, 226.82 AC +/- property is located on Watson Rd. in Candler County, Georgia. The property is currently zoned for agricultural use. The property is being offered for sale by Plantation Properties & Land Investments, LLC.

Source URL: <https://www.landandrivers.com/property/watson-road-farm>