



Drone Road Farm

Drone Road Farm is 180± acres located west of Waynesboro, GA. Whether you enjoy hunting, farming, ATV riding or just want to get away from the hustle of everyday life, this is the place for you. It features 50± acres of cultivated land, 37± acres of 25 year old planted pines, and natural pine and hardwood areas. With natural timber and planted pines for coverage, many types of wildlife inhabit this land and paved road frontage along Drone Road allows for easy access. This is an ideal investment opportunity, home site, new farm, or venture property. Drone Road Farm is 15 minutes from downtown Waynesboro and 18 minutes from downtown Louisville; and just a 45 minute drive to Augusta, 1 hour & 45 minutes to Macon and approximately 2 hours to Savannah. Call today to set up a time to view this property with so much to offer! 912.764.LAND(5263)



Price: \$450,000

Property Type: Land

Status: Sold

Street/Address: Drone Rd.

City: Waynesboro

State: Georgia

Zip code: 30830

County: burke

Acreage: 180

Per Acre Price: \$2,500.00

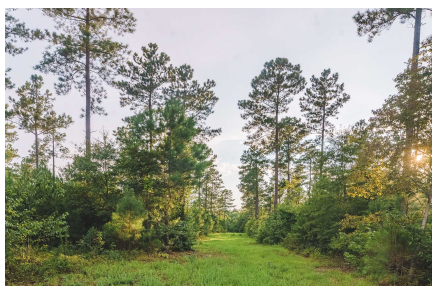
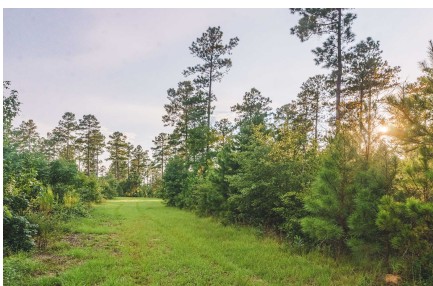
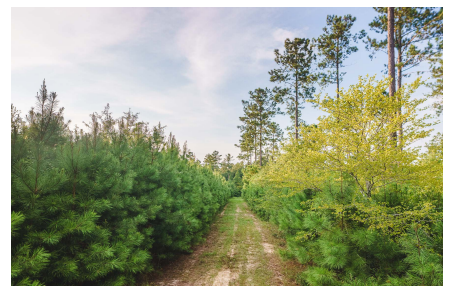
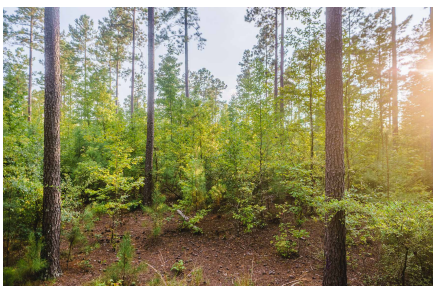
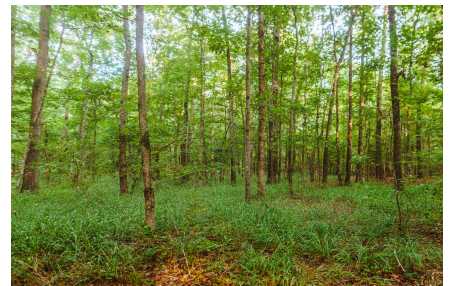
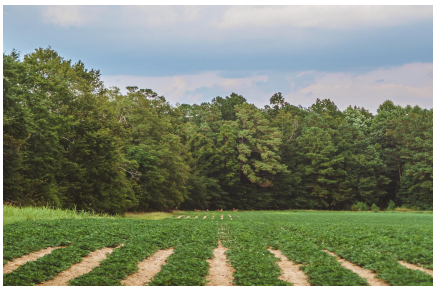
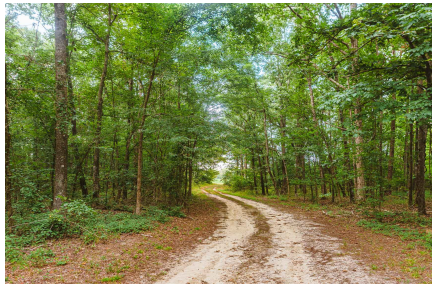
Phone Number: 912.764.LAND(5263)

Email: info@LandandRivers.com

Google Maps link: [View Larger Map](#)

Drone Road Farm

Published on Plantation Properties & Land Investments, LLC (<https://www.landanddrivers.com>)



Drone Road Farm

Published on Plantation Properties & Land Investments, LLC (<https://www.landandrivers.com>)



Aerial Map

Drone Road Farm

Published on Plantation Properties & Land Investments, LLC (<https://www.landanddrivers.com>)

180+/- acres on Drone Rd.
Burke County, Georgia. 180 AC +/-

PLANTATION PROPERTIES
LAND INVESTMENTS, LLC



Red Line Road / Trail Red Line Road / Trail

Jason Williams
P: 912-704-LAND (52763) or 1-833-GOT-LAND (186-5203)

info@landanddrivers.com | landers@landers.com

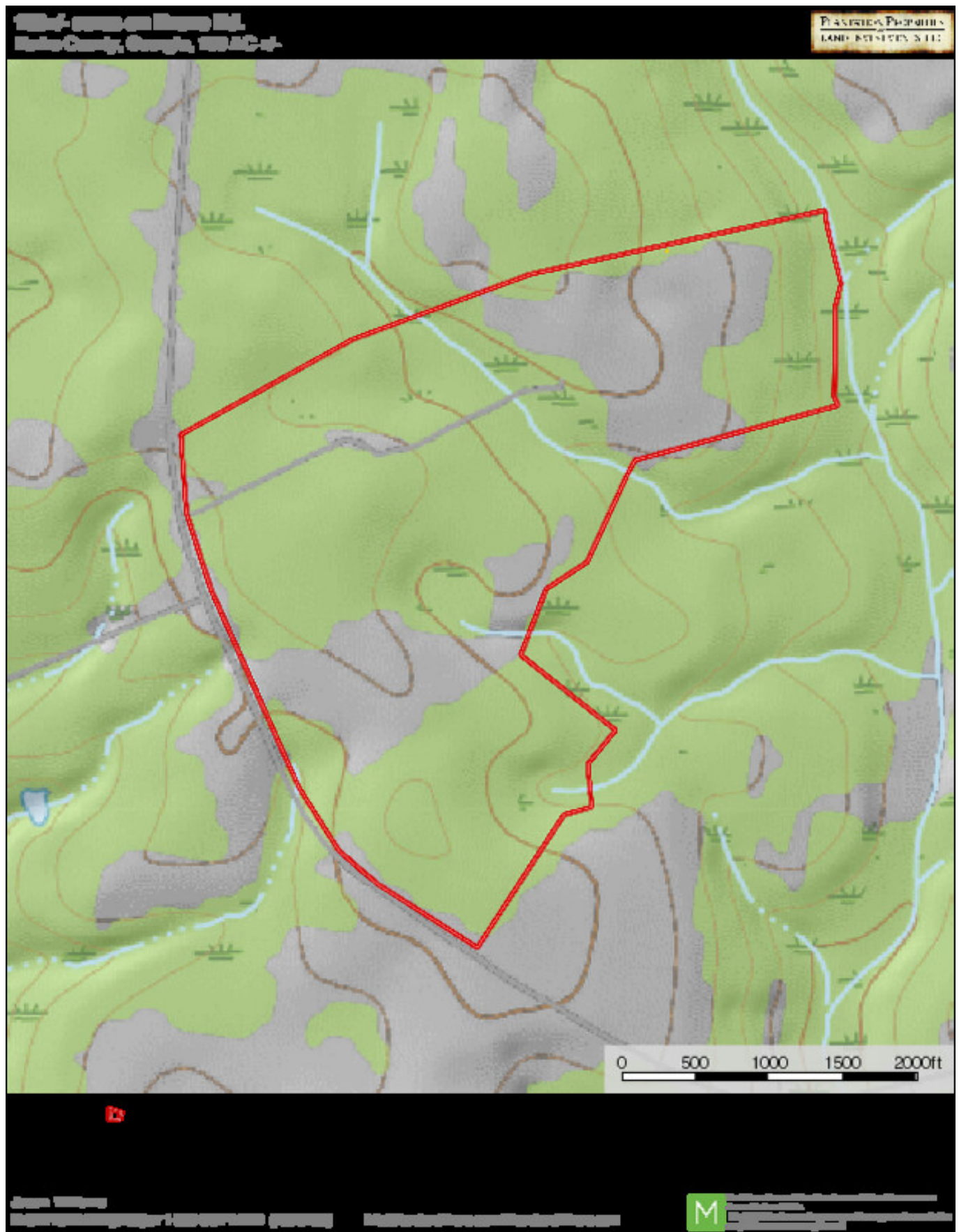


Plantation Properties & Land Investments, LLC is an equal opportunity employer. We are an equal opportunity employer. We are an equal opportunity employer. We are an equal opportunity employer.

Topo Map

Drone Road Farm

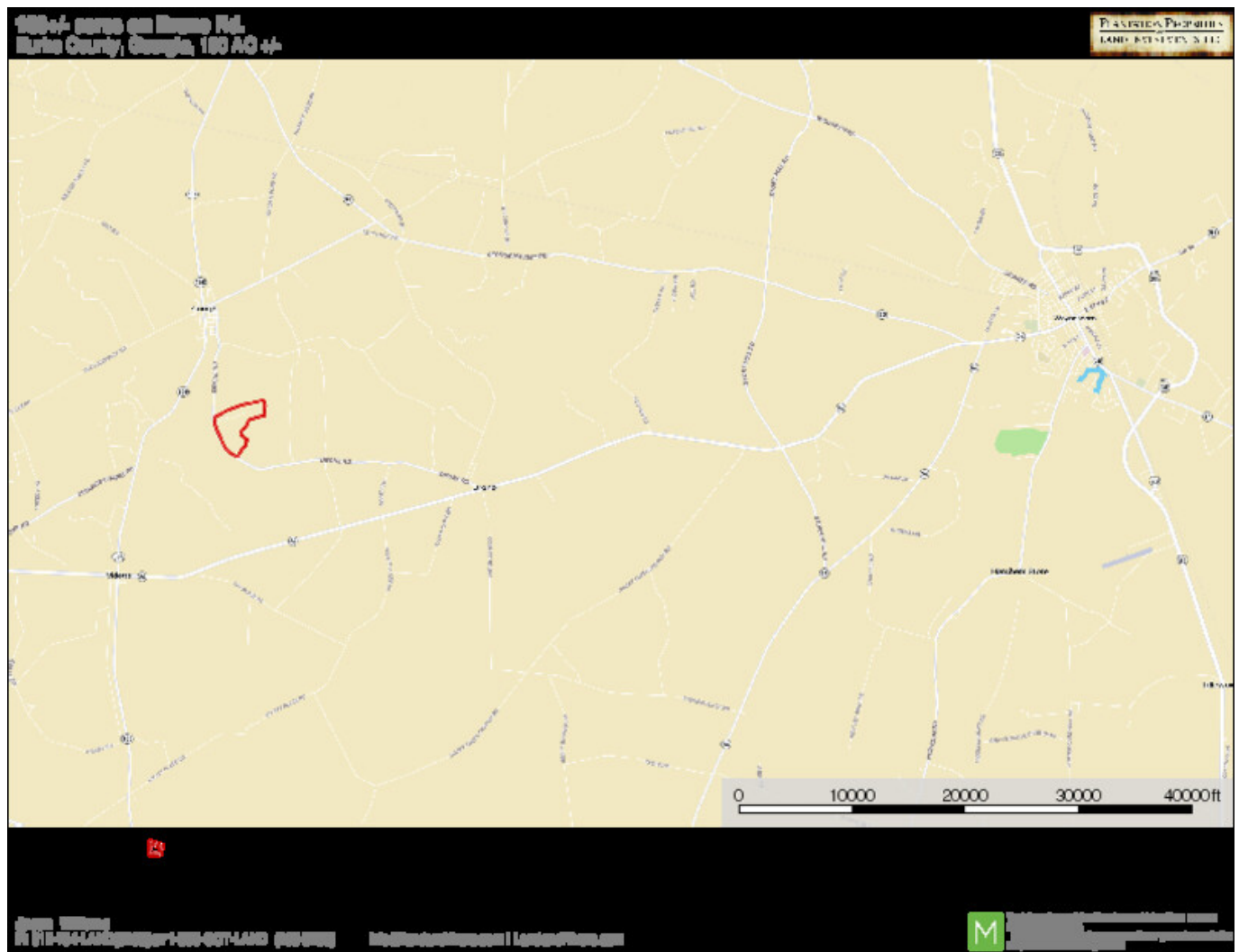
Published on Plantation Properties & Land Investments, LLC (<https://www.landanddrivers.com>)



Location Map

Drone Road Farm

Published on Plantation Properties & Land Investments, LLC (<https://www.landanddrivers.com>)



Source URL: <https://www.landanddrivers.com/property/drone-road-farm>