



Bream Bed Farm

Bream Bed Farm is 89± acres on Rocky Ford Road in Bulloch County. It features a 9± pond, which is the perfect spot for duck hunting. There is also an old farm house on the property that would be a great remodel project and 46± acres of cultivated land. Having paved road frontage, electricity and a well, this property would make the perfect home site, recreational tract or weekend retreat. Enjoy farming, fishing, hunting and more on your own property! Call today to schedule a showing. 912.764.LAND(5263)



Price: \$360,000

Property Type: Land

Status: Sold

Street/Address: 4324 Rocky Ford Rd.

City: Portal

State: Georgia

Zip code: 30450

County: bulloch

Acreage: 89

Per Acre Price: \$0.00

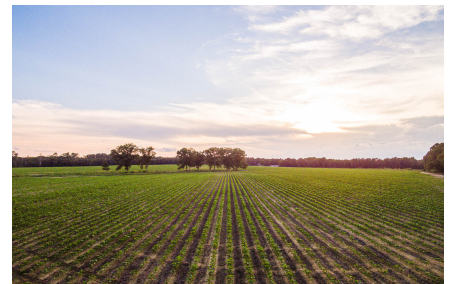
Phone Number: 912.764.LAND(5263)

Email: info@LandandRivers.com

Google Maps link: [View Larger Map](#)

Bream Bed Farm

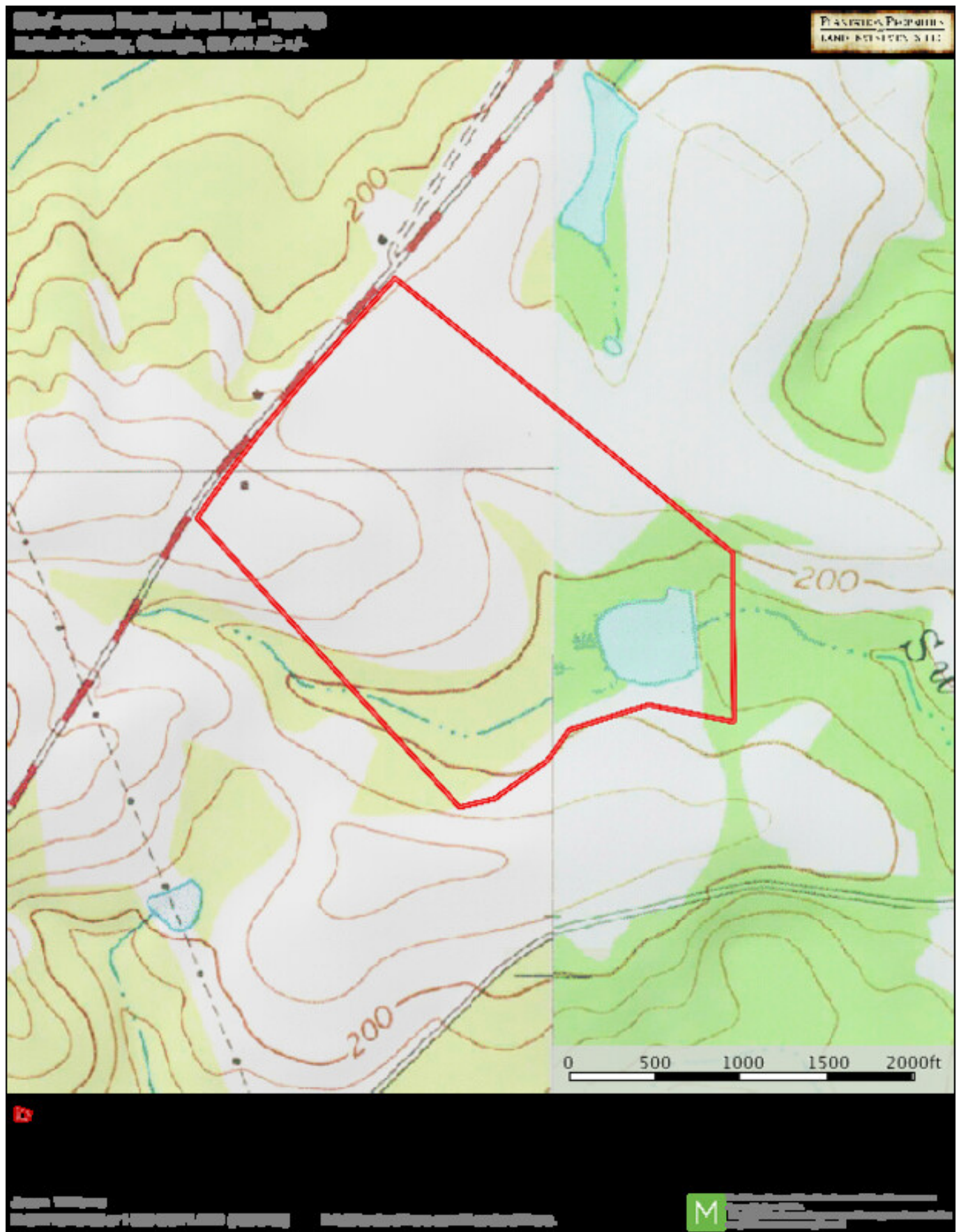
Published on Plantation Properties & Land Investments, LLC (<https://www.landanddrivers.com>)



Topo Map

Bream Bed Farm

Published on Plantation Properties & Land Investments, LLC (<https://www.landanddrivers.com>)



Location Map

Bream Bed Farm

Published on Plantation Properties & Land Investments, LLC (<https://www.landanddrivers.com>)



Aerial Map

Bream Bed Farm

Published on Plantation Properties & Land Investments, LLC (<https://www.landandrivers.com>)

89+/- acres Rocky Ford Rd.
Bulloch County, Georgia, 89.44 AC +/-

PLANTATION PROPERTIES
LAND INVESTMENTS, LLC



Boundary

Jason Williams
PH: 912-754-LAND(5263) or 1-833-007-LAND (406-0200)

info@landandrivers.com | [LandandRivers.com](https://www.LandandRivers.com)

M While this map is made with the best available data, it is not a warranty of accuracy. The information is provided for informational purposes only and should not be used for legal or financial decisions.

Soil Map

Published on Plantation Properties & Land Investments, LLC (<https://www.landandrivers.com>)



PLANTATION PROPERTIES
LAND INVESTMENTS, LLC



12/20/2019

info@landrovers.com | LandRovers.com



² "The first of the two is a simple, direct, and unambiguous statement of the fact that the system is not working." (H. J. Goldhamer, *ibid.*)

Page 6 of 6