



## Poplar Springs

Timber Investment, home place, recreational and hunting! Poplar Springs is 200± acres located in Bulloch County between Portal and Twin City, on Poplar Springs Church Rd. This is a nice tract with ample opportunity to enjoy the outdoors and obtain a good land investment. The property features a 1,475 sq ft brick house built in 1974; with 2 bedrooms and 2 bathrooms, 2 storage sheds, pole barn and a 5± acre pond. There are 111± acres of 33 yr. old Loblolly pines, and 86± acres of natural pine and hardwoods. This property has dirt road frontage, a great interior road system and an array of wildlife; including deer, turkey and numerous other small game. This would be a great place to call home or a weekend get-a-way! Located only 15 miles from downtown Statesboro, 2 hours from Macon, and 1.5 hours from Savannah or Augusta. Call Jason Williams today and schedule a time to take a tour! 912.764.LAND(5263)



**Price:** \$650,000

**Property Type:** Land

**Status:** Sold

**Street/Address:** 2632 Poplar Springs Church Rd

**City:** Twin City

**State:** Georgia

**Zip code:** 30471

**County:** bulloch

**Acreage:** 200

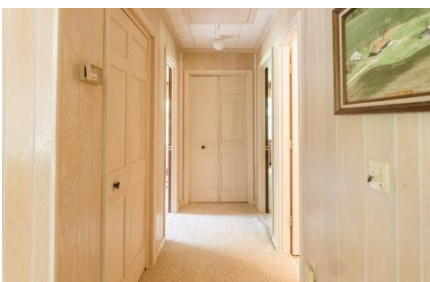
**Per Acre Price:** \$3,242.00

**Phone Number:** 912-764-LAND(5263)

**Email:** [info@LandandRivers.com](mailto:info@LandandRivers.com)

**Google Maps link:** [View Larger Map](#)







## Poplar Springs

Published on Plantation Properties & Land Investments, LLC (<https://www.landanddrivers.com>)

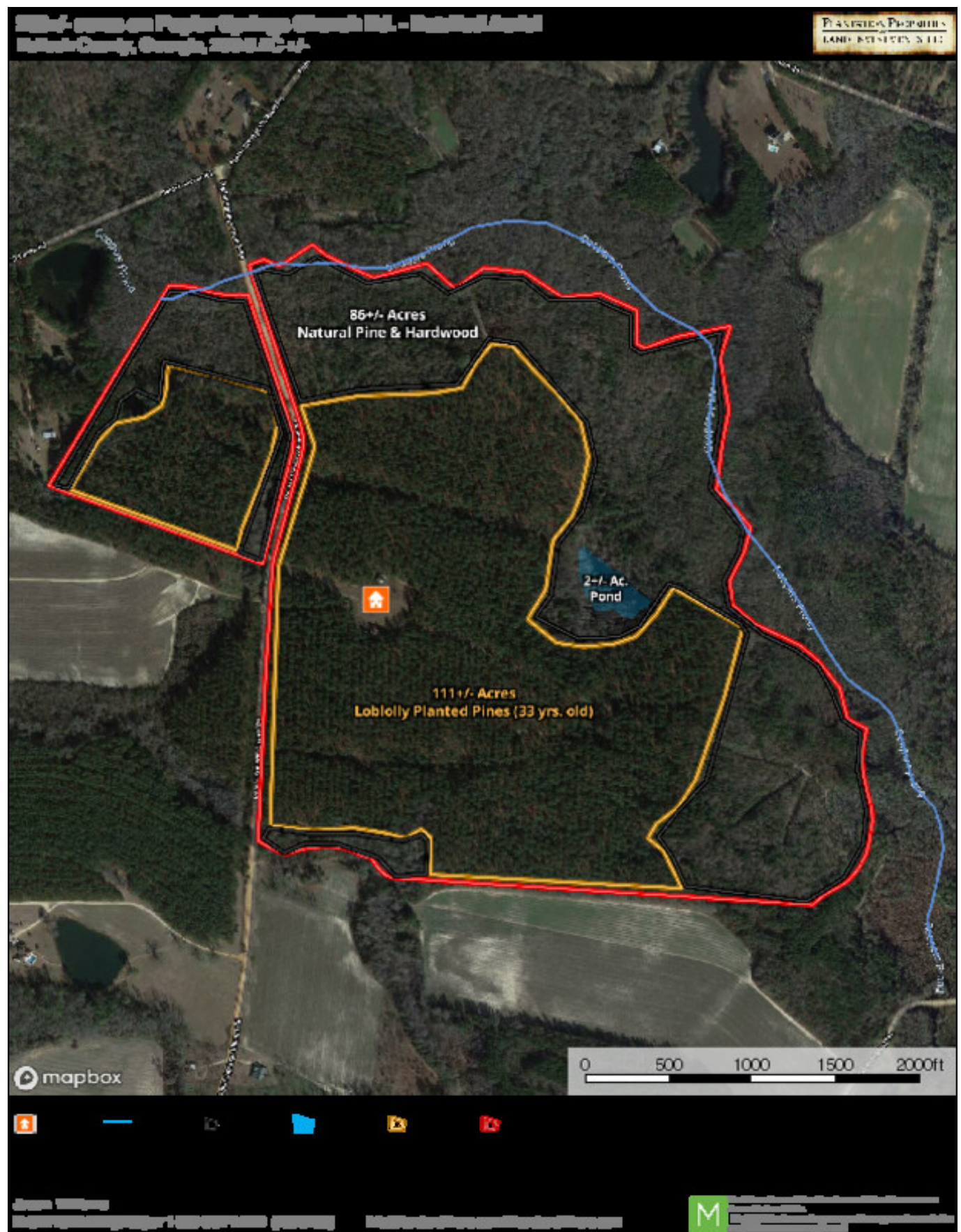
---



## Aerial Map

## Poplar Springs

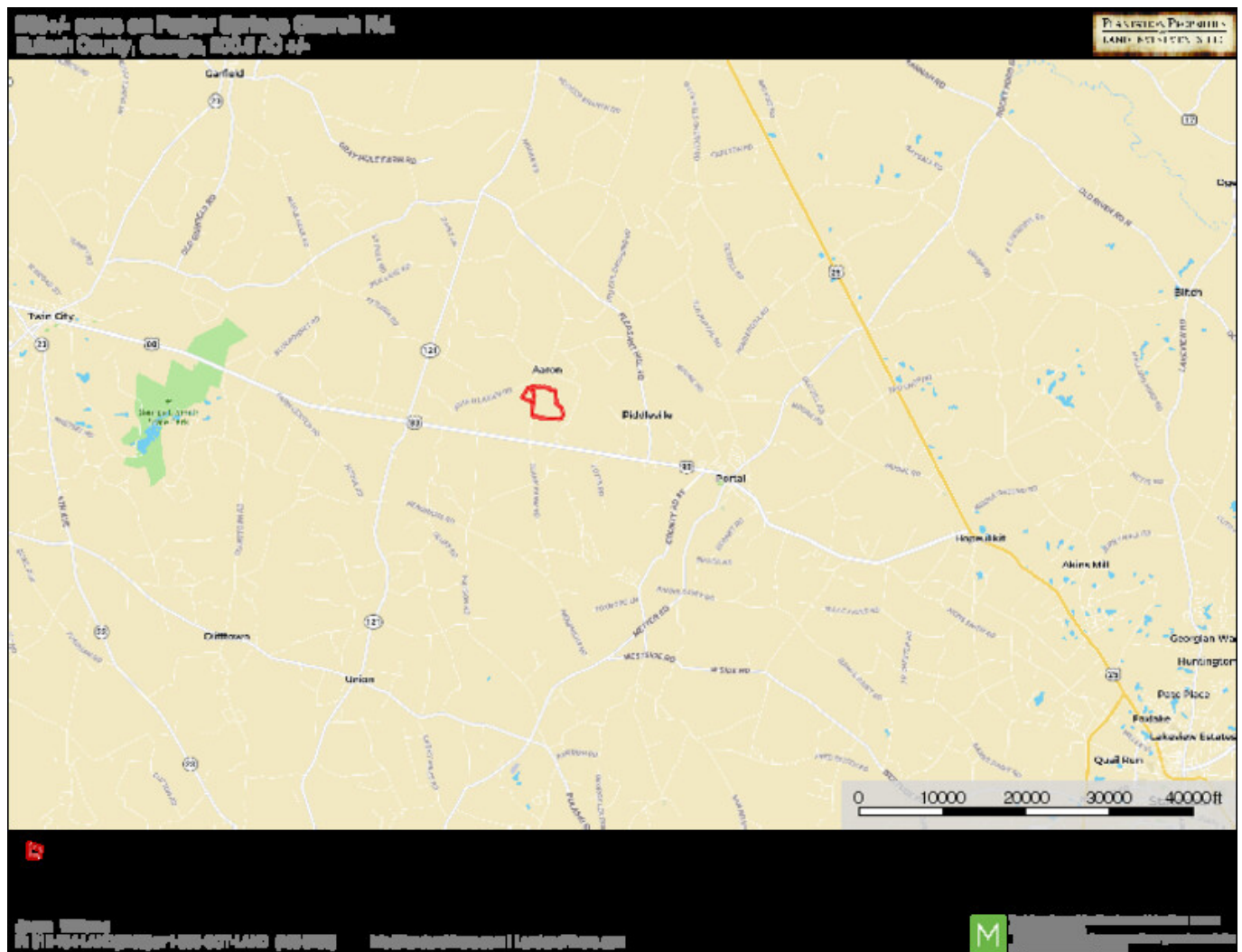
Published on Plantation Properties & Land Investments, LLC (<https://www.landanddrivers.com>)



## Location Map

# Poplar Springs

Published on Plantation Properties & Land Investments, LLC (<https://www.landanddrivers.com>)

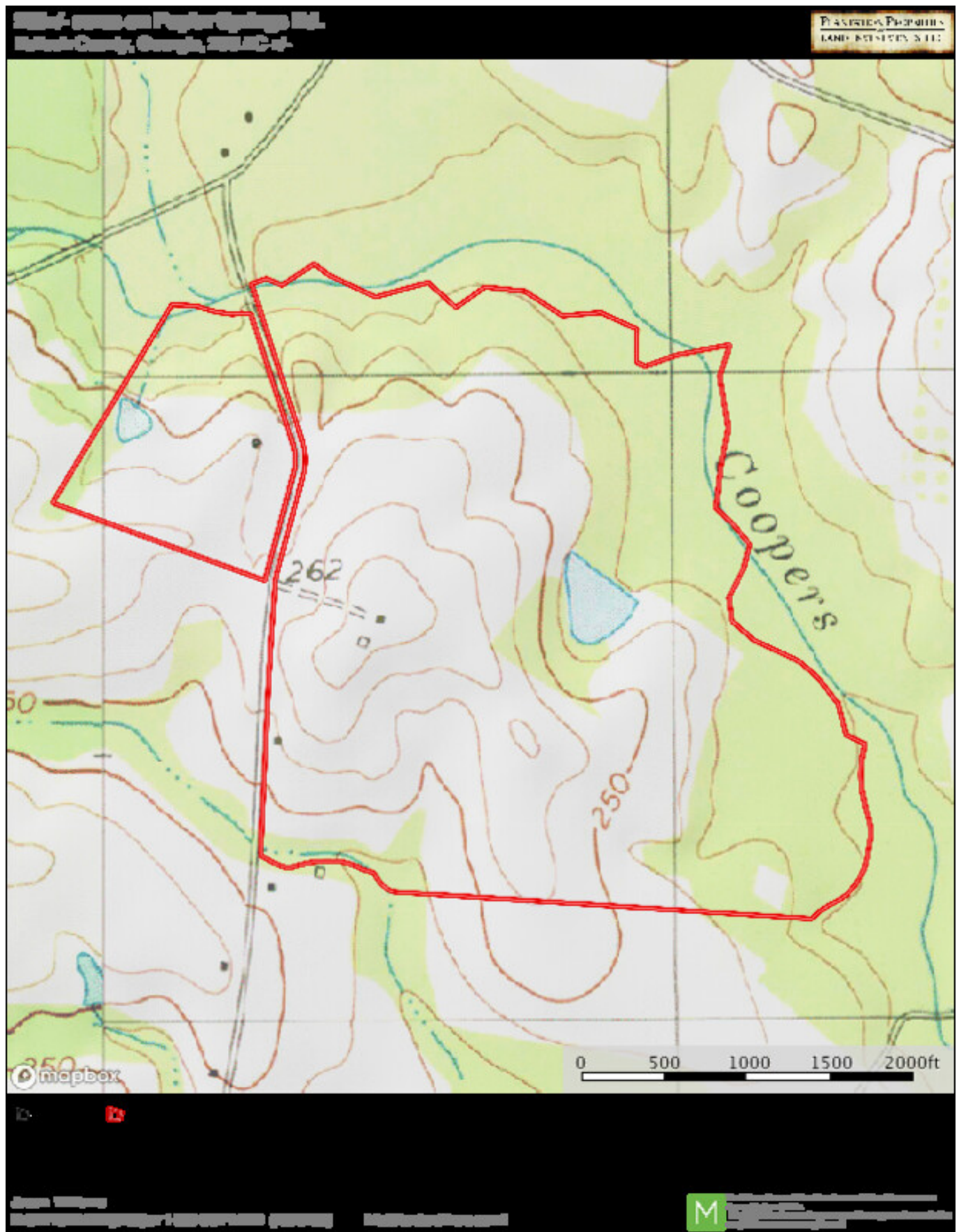


## TOPO Map



## Poplar Springs

Published on Plantation Properties & Land Investments, LLC (<https://www.landanddrivers.com>)



Source URL: <https://www.landanddrivers.com/property/poplar-springs>