



## Belcher Branch

PRICE REDUCED!!! Excellent investment, residential development and recreational opportunity in Bulloch County! 100± acres located north of downtown Statesboro off of Francis Scott Drive. Property is zoned R-25 for residential development and features wooded and open land with a great interior road system. This property is also available subdivided into two 50± acre tracts. Contact us today for more information! Jason Williams (912)764-LAND (5263)



**Price:** \$600,000

**Property Type:** Land

**Status:** Sold

**Street/Address:** Francis Scott Dr

**City:** Statesboro

**State:** Georgia

**Zip code:** 30458

**County:** bulloch

**Acreage:** 100

**Per Acre Price:** \$6,000.00

**Phone Number:** 912.764.LAND(5263)

**Email:** [info@LandandRivers.com](mailto:info@LandandRivers.com)

**Google Maps link:** [View Larger Map](#)

## Belcher Branch

Published on Plantation Properties & Land Investments, LLC (<https://www.landanddrivers.com>)

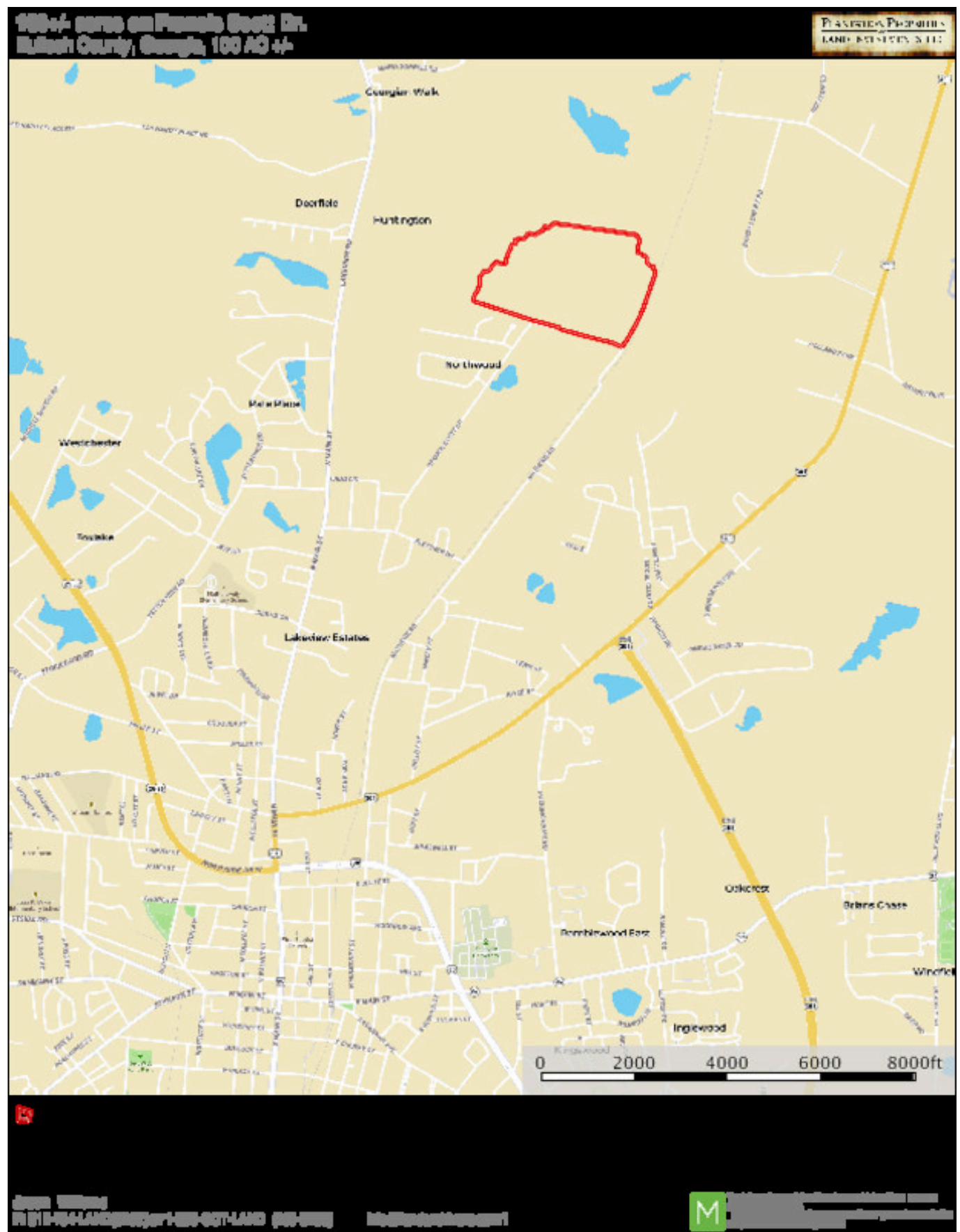


## Aerial Map



## Location Map





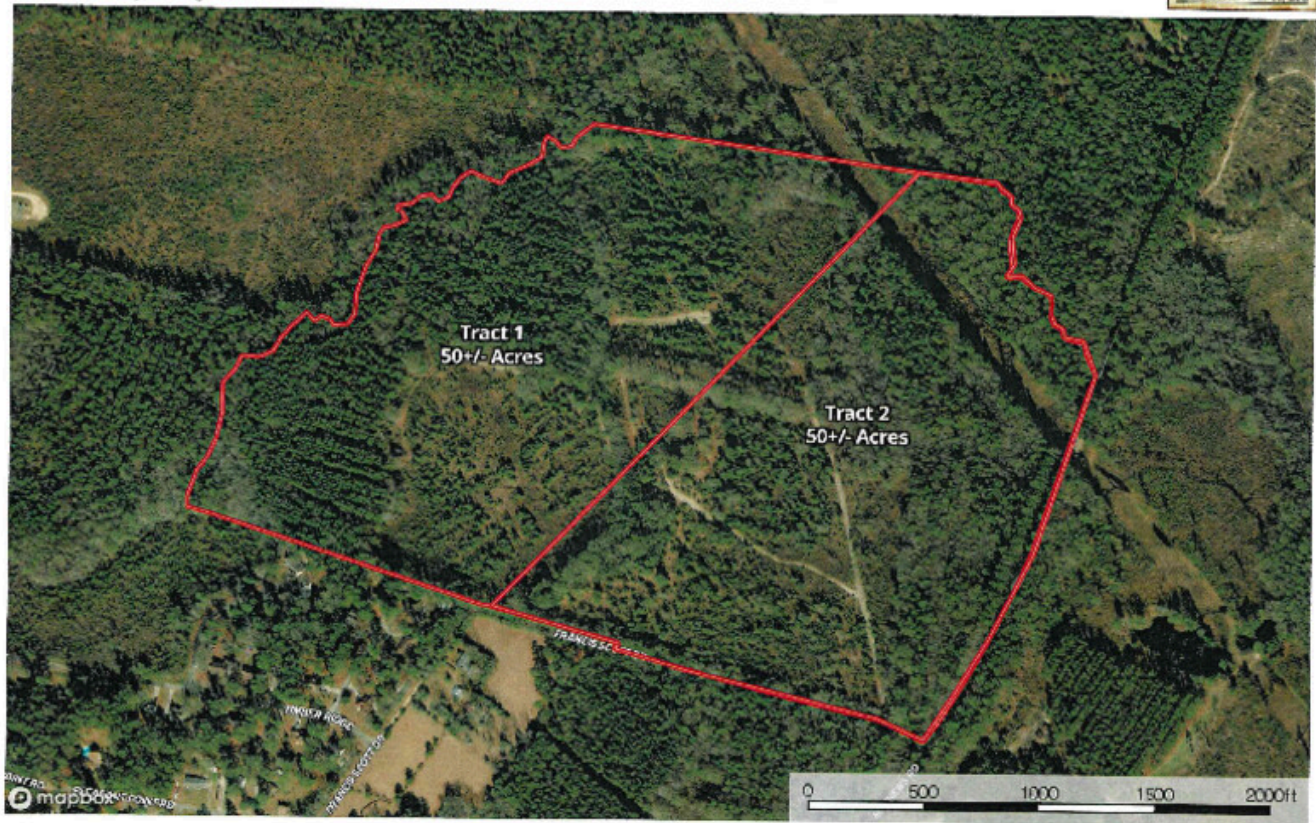
## Subdivided Aerial

## Belcher Branch

Published on Plantation Properties & Land Investments, LLC (<https://www.landanddrivers.com>)

100+/- acres on Francis Scott Dr. - Subdivided  
Bullock County, Georgia, 100 AC +/-

PLANTATION PROPERTIES  
LAND INVESTMENTS, LLC



Jason Williams  
P: 612-784-LAND(5225) or 1-833-50T-LAND (438-5213) info@landanddrivers.com | www.landanddrivers.com

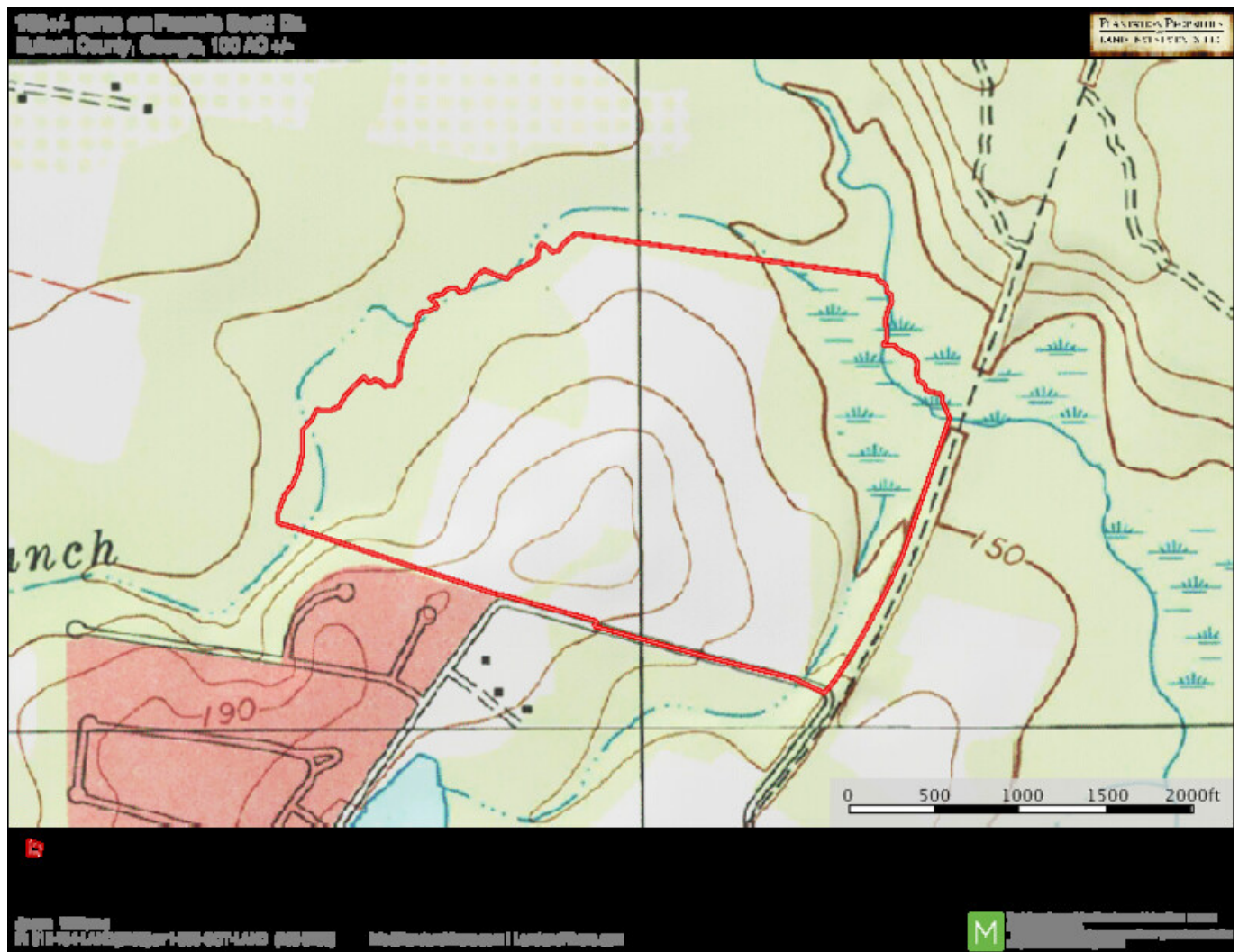
**M** LAND AND DRIVERS, LLC IS AN EQUAL OPPORTUNITY COMPANY. WE DO NOT DISCRIMINATE ON THE BASIS OF RACE, GENDER, RELIGION, NATIONAL ORIGIN, ANCESTRY, AGE, SEX, OR SEXUAL ORIENTATION. WE ARE AN EQUAL OPPORTUNITY EMPLOYER. WE DO NOT DISCRIMINATE ON THE BASIS OF RACE, GENDER, RELIGION, NATIONAL ORIGIN, ANCESTRY, AGE, SEX, OR SEXUAL ORIENTATION.

## Topo Map



## Belcher Branch

Published on Plantation Properties & Land Investments, LLC (<https://www.landanddrivers.com>)



Source URL: <https://www.landanddrivers.com/property/belcher-branch>