

## Harville Road Tract 1

Published on Plantation Properties & Land Investments, LLC (<https://www.landandrivers.com>)

---



## Harville Road Tract 1

7+/- acres of land in a prime location! Property features paved road frontage along Harville Road, 5+/- acres of cultivated land and 2+/- acres of wooded land. This property is in an ideal location only 4 miles from GSU campus, downtown Statesboro and convenient to I-16. Call Jason today (912) 764-LAND (5263)



**Price:** \$105,000

**Property Type:** Land

**Status:** Sold

**Street/Address:** Harville Rd

**City:** Statesboro

**State:** Georgia

**Zip code:** 30458

**County:** bulloch

**Acreage:** 7

**Per Acre Price:** \$15,000.00

**Phone Number:**

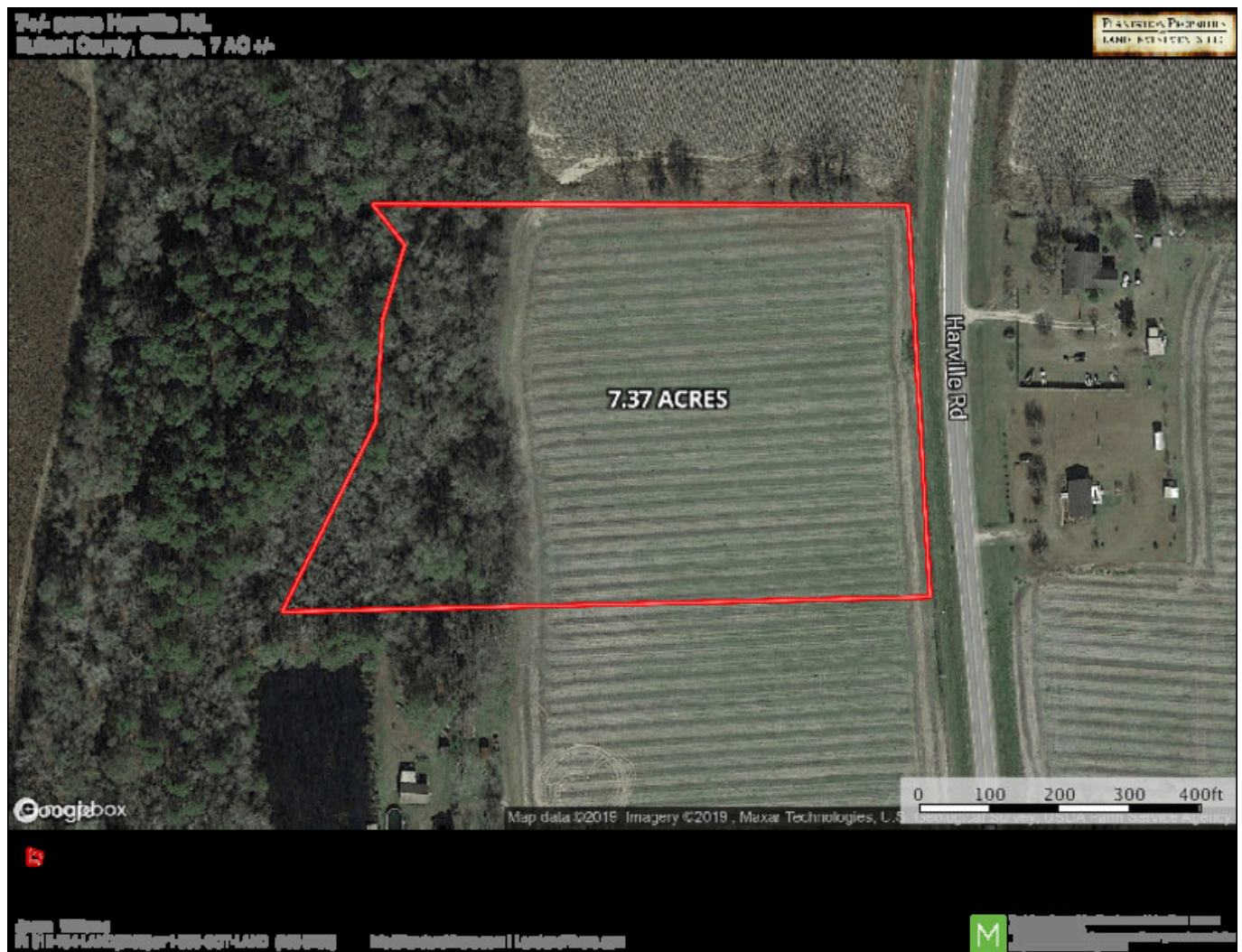
**Email:** [info@LandandRivers.com](mailto:info@LandandRivers.com)

**Google Maps link:** [View Larger Map](#)

## Aerial Map

## Harville Road Tract 1

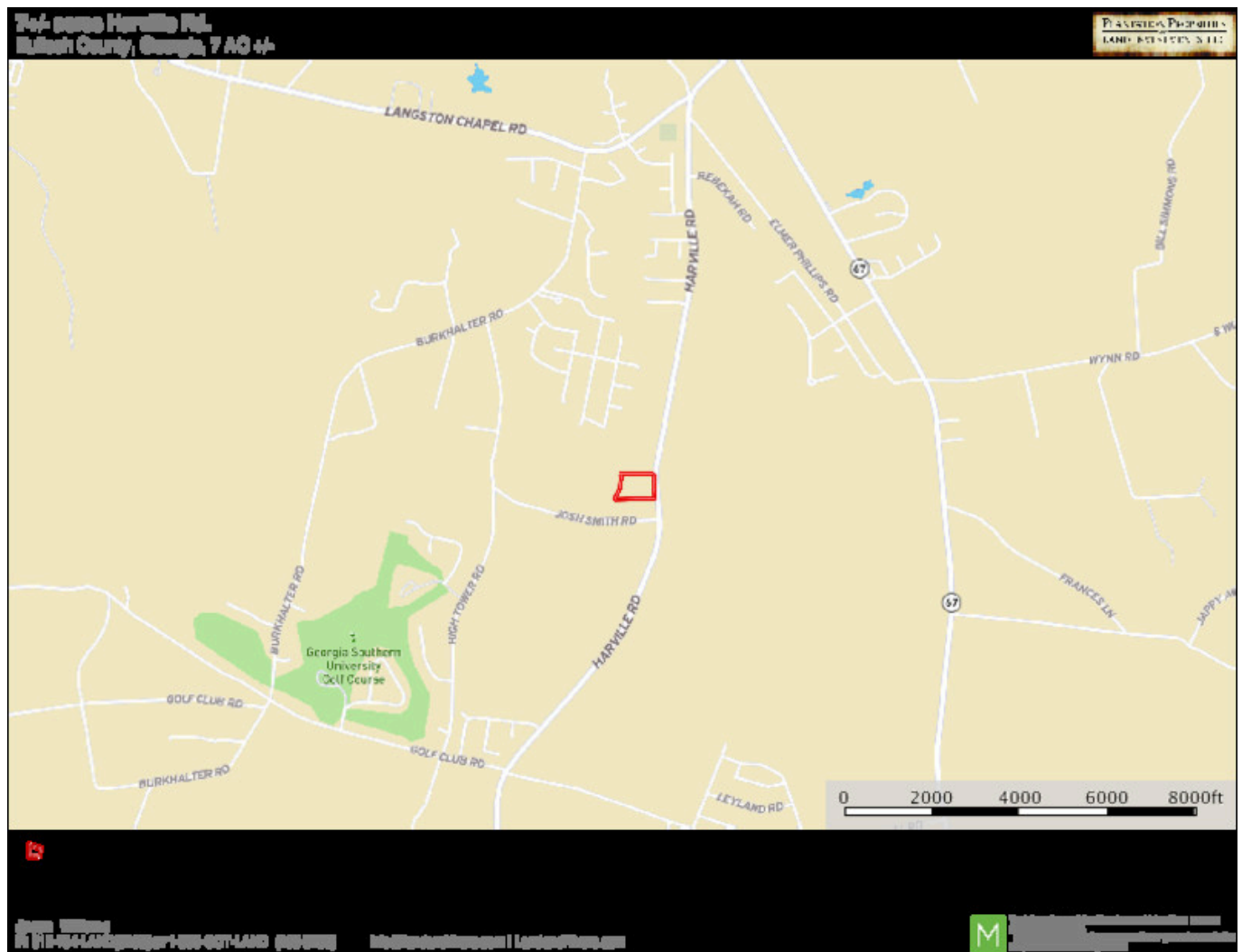
Published on Plantation Properties & Land Investments, LLC (<https://www.landanddrivers.com>)



## Location Map

## Harville Road Tract 1

Published on Plantation Properties & Land Investments, LLC (<https://www.landanddrivers.com>)



## Tracts 1,2,3 Harville Rd



Published on Plantation Properties & Land Investments, LLC (<https://www.landandrivers.com>)

