



Thompson Pond

217± acres of land located approximately 6.5 miles north of Statesboro, GA with frontage on Hwy 301 and Old River Rd North in Bulloch County. If you are looking for an investment and recreational tract then this is a must see! The property features a 1,848 sq ft mobile home with screen porch overlooking the 2.5 acre pond with a wood dock, an 864sq ft shelter with a 432 sq ft side shelter, 70± acres of 30 year old planted pines & 95± acres of 2± year old planted pines. This property would make a great hunting tract and weekend getaway! Located between Statesboro and Sylvania only 1 hour from Savannah and 1.5 hours from Augusta. Call Jason Williams today to schedule a tour (912) 764-5263



Price: \$490,000

Property Type: Land

Status: Sold

Street/Address: 7000 Old River Rd North

City: Statesboro

State: Georgia

Zip code: 30461

County: bulloch

Acreage: 217

Per Acre Price: \$2,258.00

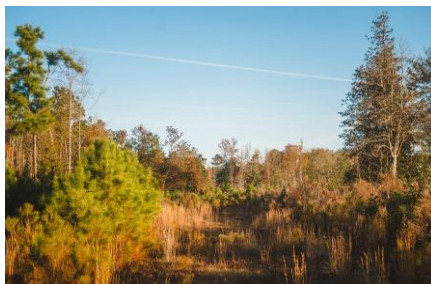
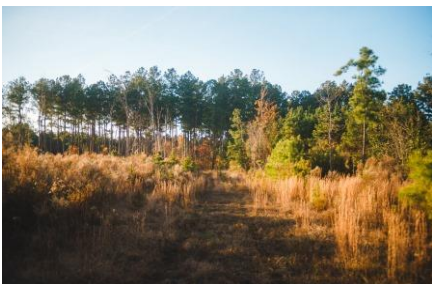
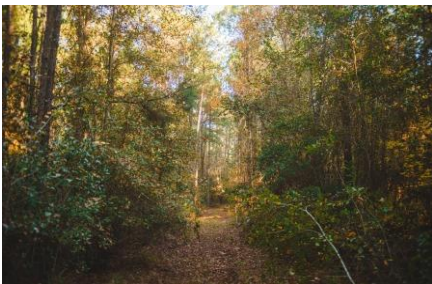
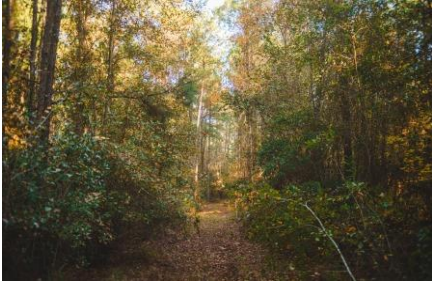
Phone Number: 912.764.LAND(5263)

Email: info@landanddrivers.com

Google Maps link: [View Larger Map](#)

Thompson Pond

Published on Plantation Properties & Land Investments, LLC (<https://www.landanddrivers.com>)



Thompson Pond

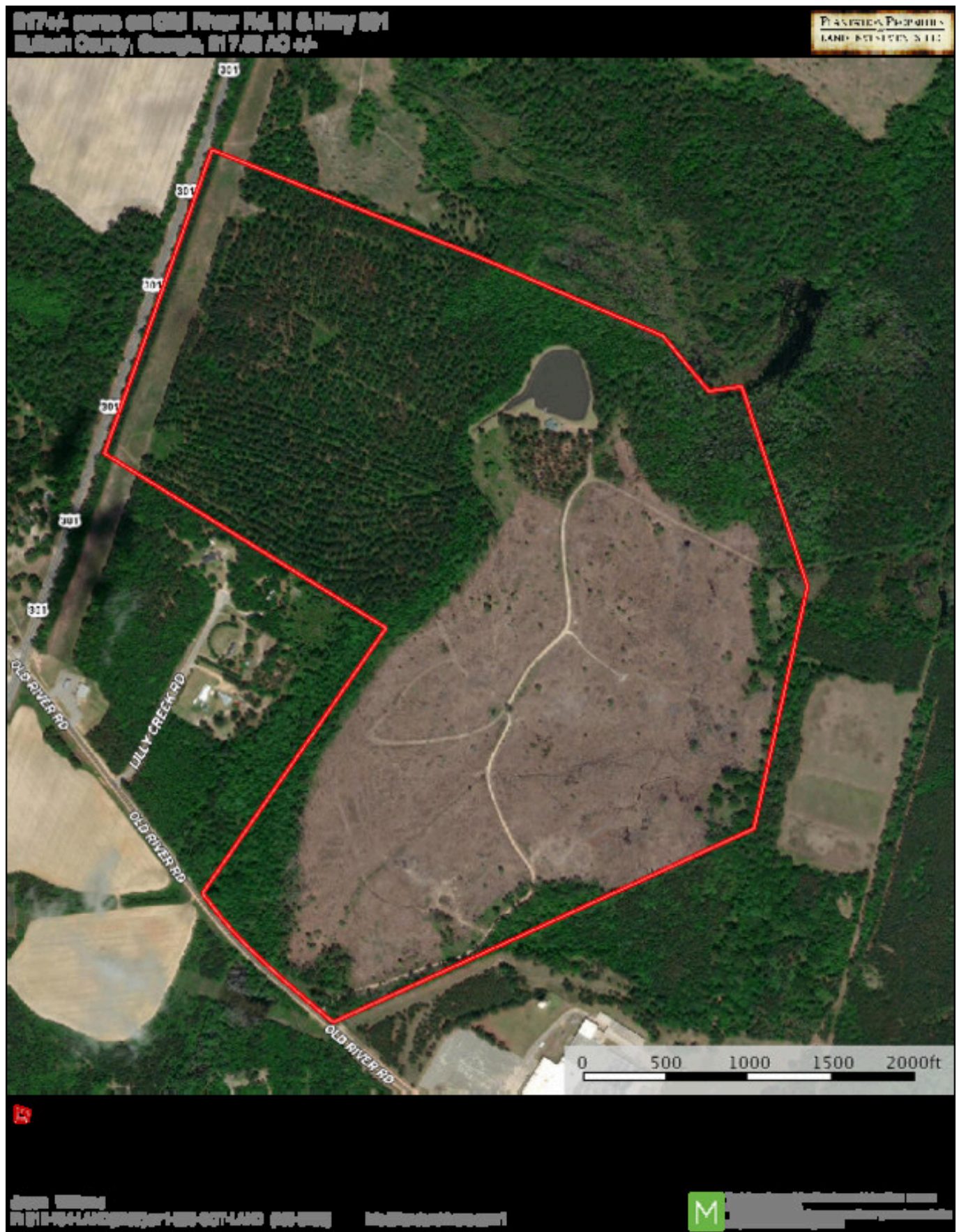
Published on Plantation Properties & Land Investments, LLC (<https://www.landanddrivers.com>)



Aerial Map

Thompson Pond

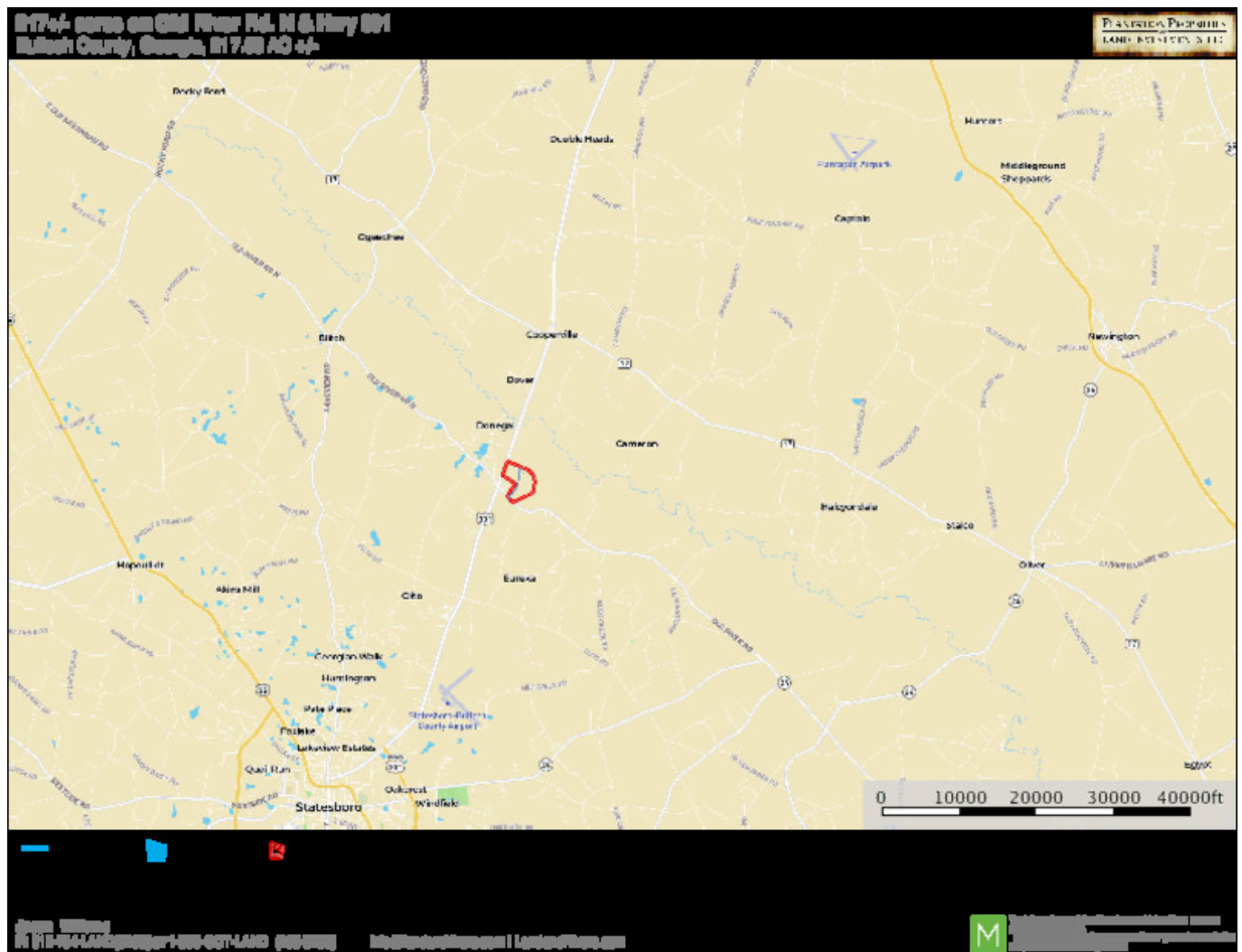
Published on Plantation Properties & Land Investments, LLC (<https://www.landanddrivers.com>)



Location Map

Thompson Pond

Published on Plantation Properties & Land Investments, LLC (<https://www.landanddrivers.com>)



Source URL: <https://www.landanddrivers.com/property/thompson-pond>