

Harville Road

Published on Plantation Properties & Land Investments, LLC (<https://www.landandrivers.com>)



Harville Road

PRICE REDUCED!!!!!! 157± acres of prime residential development land located only minutes from GSU campus, downtown Statesboro and Interstate 16! Property has paved road frontage and features cultivated land surrounded by natural hardwoods and pines. Property can be divided. See map for details. Call Jason Williams today (912)764-LAND(5263)



Price: \$0

Property Type: Land

Status: Sold

Street/Address: Harville Rd

City: Statesboro

State: Georgia

Zip code: 30458

County: bulloch

Acreage: 157

Per Acre Price: \$11,000.00

Phone Number: 912.764.LAND(5263)

Email: info@LandandRivers.com

Google Maps link: [View Larger Map](#)

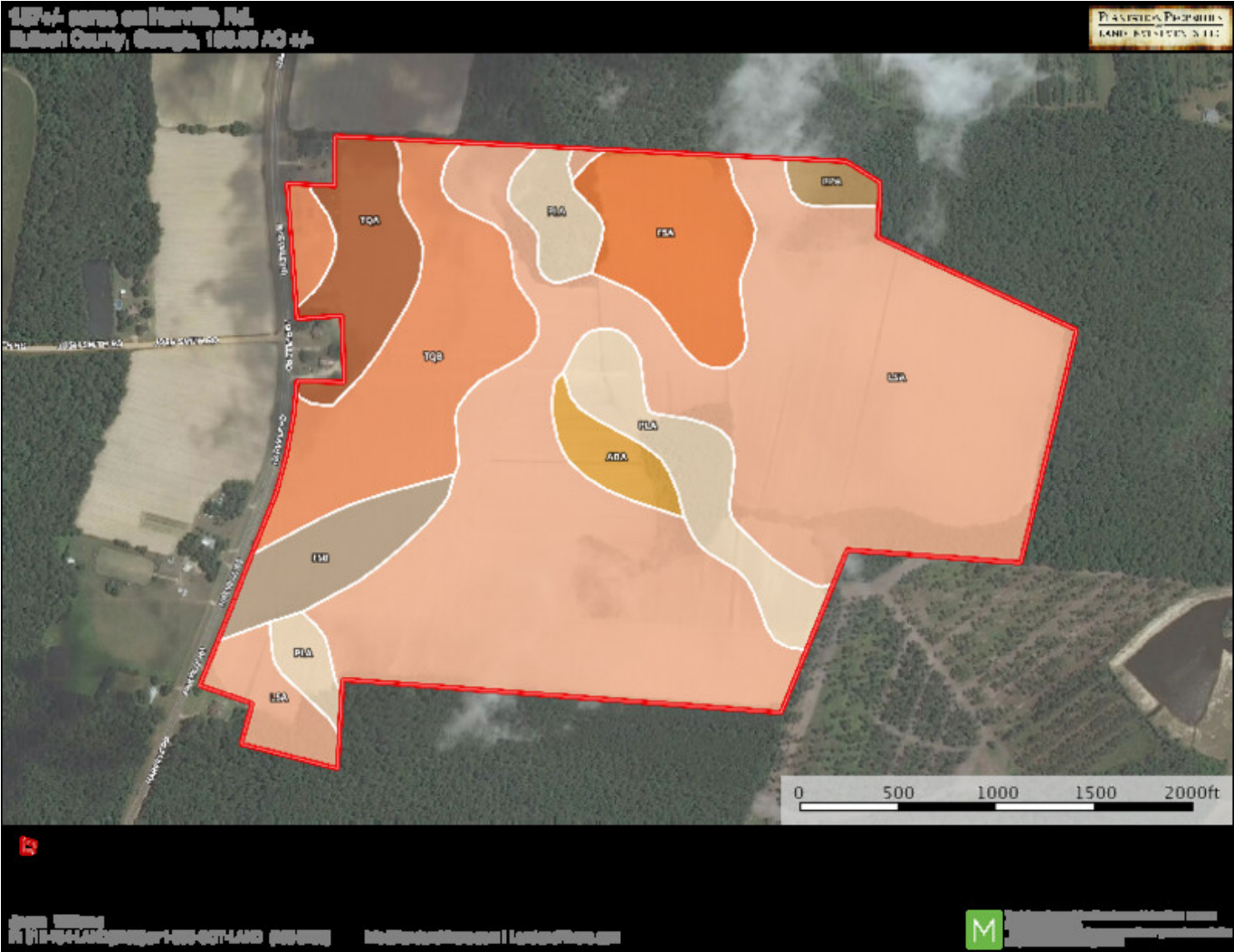
Published on Plantation Properties & Land Investments, LLC (<https://www.landandrivers.com>)



Page 2 of 5

Harville Road

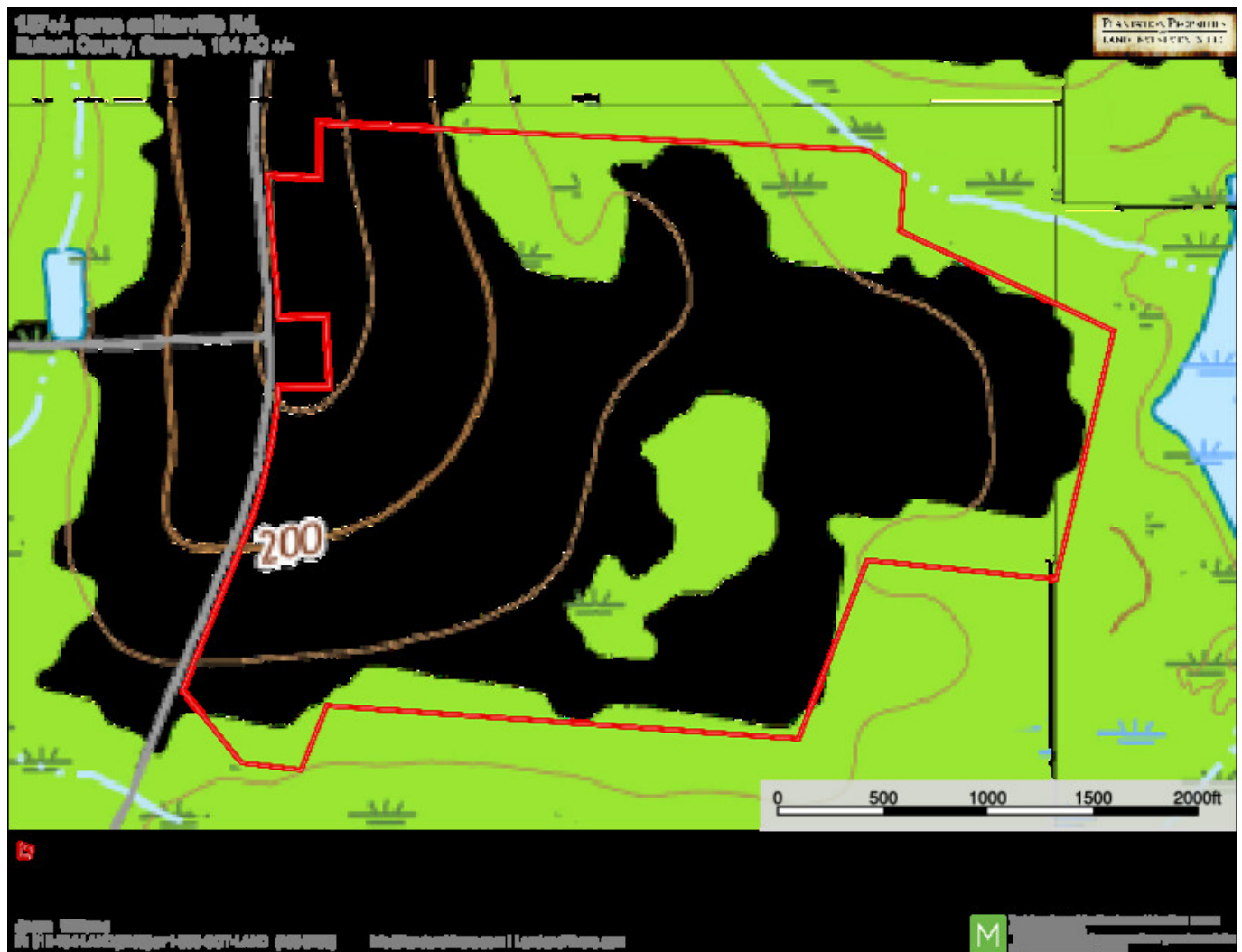
Published on Plantation Properties & Land Investments, LLC (<https://www.landanddrivers.com>)



Topo Map

Harville Road

Published on Plantation Properties & Land Investments, LLC (<https://www.landanddrivers.com>)



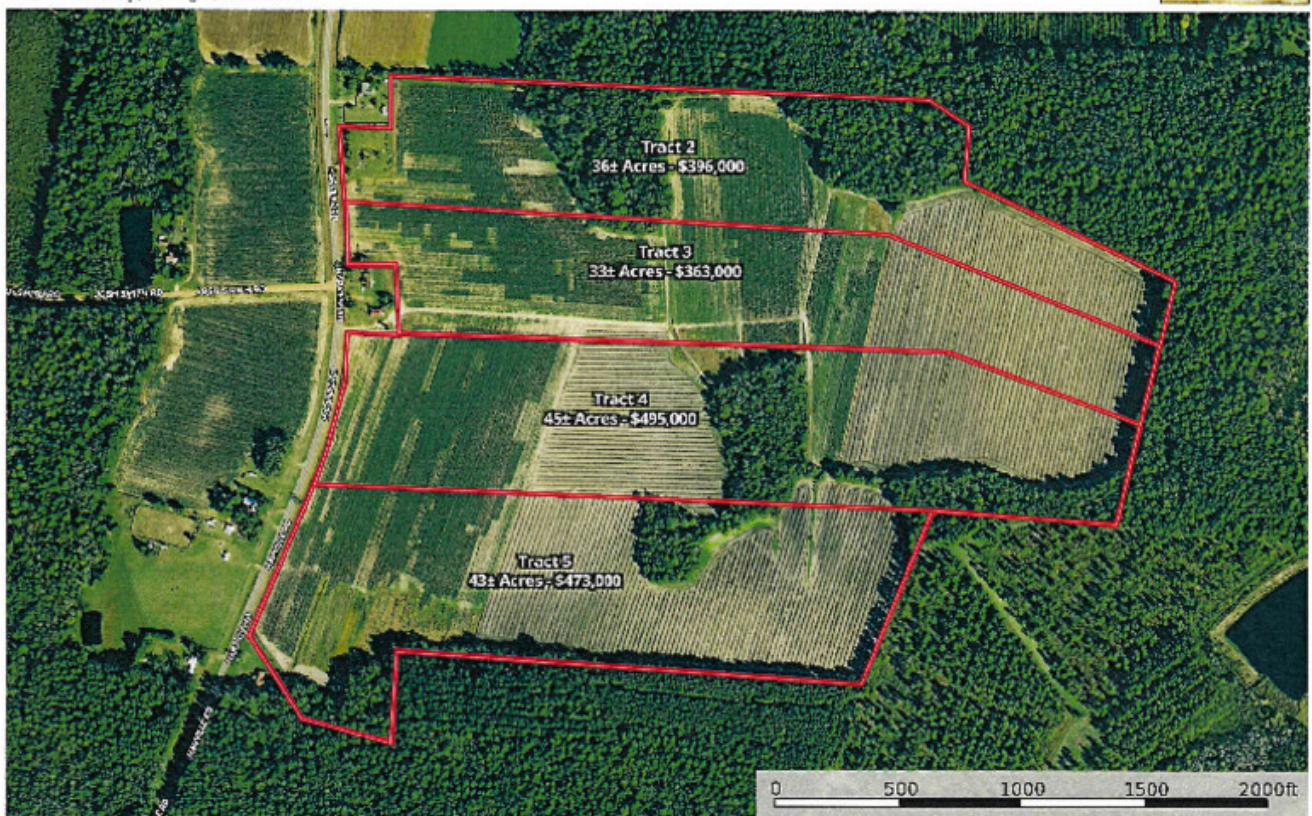
Divided Aerial

Harville Road

Published on Plantation Properties & Land Investments, LLC (<https://www.landanddrivers.com>)

Harville Rd. - Tracts 2-5
Bulloch County, Georgia, 157 AC +/-

PLANTATION PROPERTIES
LAND INVESTMENTS, LLC



Jason Williams
P: 912-764-4AKU(x263) or 1-800-220-14AND (438-6263)

jw@landanddrivers.com | [landanddrivers.com](https://www.landanddrivers.com)

More information on this property is available at www.landanddrivers.com.
© 2024 Plantation Properties & Land Investments, LLC. All rights reserved.
LAND AND DRIVERS, LLC

Source URL: <https://www.landanddrivers.com/property/harville-road>