



Pryor Tract

179± acres of open/wooded land located off Pryor Road in Screven County, Georgia. Approximately 95± acres of 3 year old longleaf is enrolled in the CRP program with a 15 year contract of \$53/acre annually. There is 2.5 acres that is located along Pryor Rd that is not enrolled in the program and roughly 75± acres was cut 8 years ago. This tract would make for a great investment opportunity for any buyer!! Make this property your new home in the country, weekend “get-a-way” or sportsman’s retreat. Enjoy hunting, camping, four wheeler riding, and more all on your own land. Call today for more details or to set up a showing to view this great tract. 912.764.5263



Price: \$339,205

Property Type: Land

Status: Sold

Street/Address: 0 Pryor Rd

City: Newington

State: Georgia

Zip code: 30446

County: screven

Acreage: 179

Per Acre Price: \$1,895.00

Phone Number: 912.764.LAND(5263)

Email: info@landanddrivers.com

Google Maps link: [View Larger Map](#)

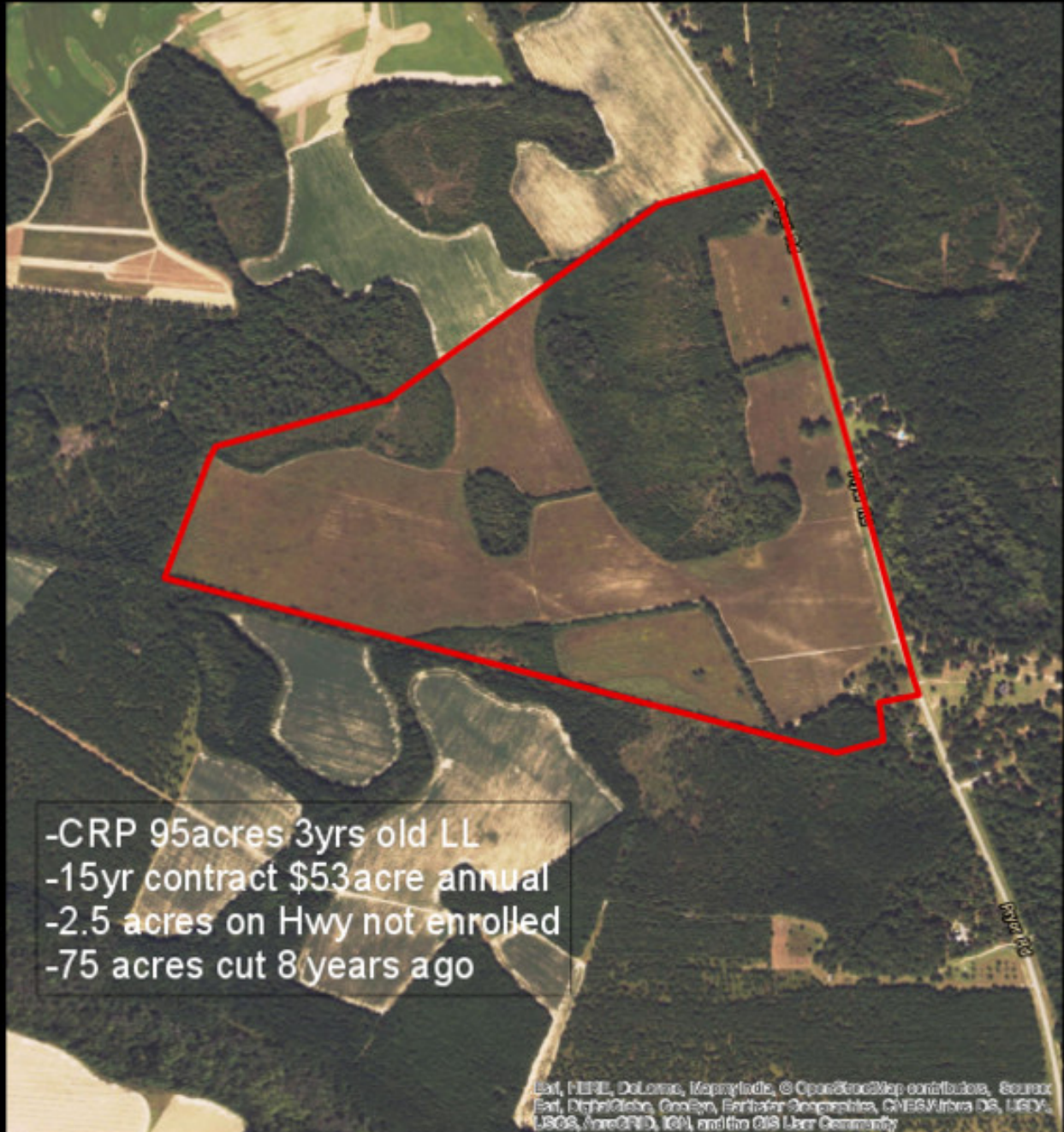
Pryor Tract

Published on Plantation Properties & Land Investments, LLC (<https://www.landanddrivers.com>)



Pryor Tract

Published on Plantation Properties & Land Investments, LLC (<https://www.landanddrivers.com>)



PLANTATION PROPERTIES & LAND INVESTMENTS, LLC

1207 Merchants Way, Suite 101 | Statesboro, GA 30458
912.764.6400 (t240) | 904.726.6681
jason@llp.com

This document is not to be distributed or duplicated.

www.LandandDrivers.com

© 2012



Pryor Tract

Published on Plantation Properties & Land Investments, LLC (<https://www.landanddrivers.com>)



Copyright© 2013 National Geographic Society, i-cubed, Esri, HERE, DeLorme, MapmyIndia, © OpenStreetMap contributors, Source: Esri, DigitalGlobe, GeoEye, Earthstar Geographics, CNES/Airbus DS, USDA, USGS, AeroGRID, IGN, and the GIS User Community

PLANTATION PROPERTIES & LAND INVESTMENTS, LLC

1207 Merchants Way, Suite 101 | Seaside, CA 94134
512.761.6110 (toll) | 706.726.6681
jason@lll.com

This document is not to be distributed or duplicated.

www.LandandDrivers.com

© 2012



Source URL: <https://www.landanddrivers.com/property/pryor-tract>