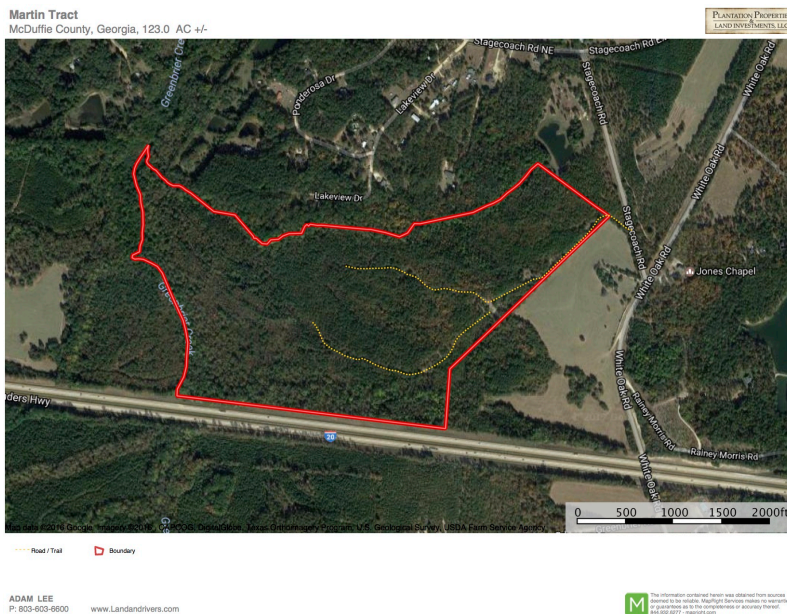




Stagecoach Rd

This property is truly a diamond in the rough. If you want to live in the country but be only minutes for town then this is your dream property. You will be just minutes from Thomson or Evans/Augusta. The area is currently growing quite well and Augusta is pushing further and further out. This property is a perfect recreation tract with a future Higher and Best use possible. The property has a small easement to the gate from Stagecoach rd. as well as frontage on I-20. The property features two small creeks, lots of room to play, Great Neighbors that dont live too close, a natural spring provides a possible pond site, Timber is varying in age and size, etc. To set up your visit call Adam Lee at 803-603-6600 or my office at 912-764-LAND(5263).



Price: \$285,000

Property Type: Land

Status: Sold

Street/Address: stagecoach rd

City: Thomson

State: Georgia

Zip code: 30824

County: mcduffie

Acreage: 123

Per Acre Price: \$0.00

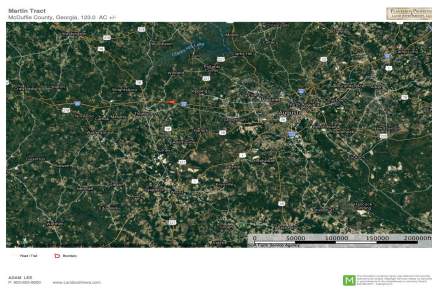
Phone Number: 803-603-6600

Email: adamlee@landandrivers.com

Google Maps link: [View Larger Map](#)

Published on Plantation Properties & Land Investments, LLC (<https://www.landanddrivers.com>)

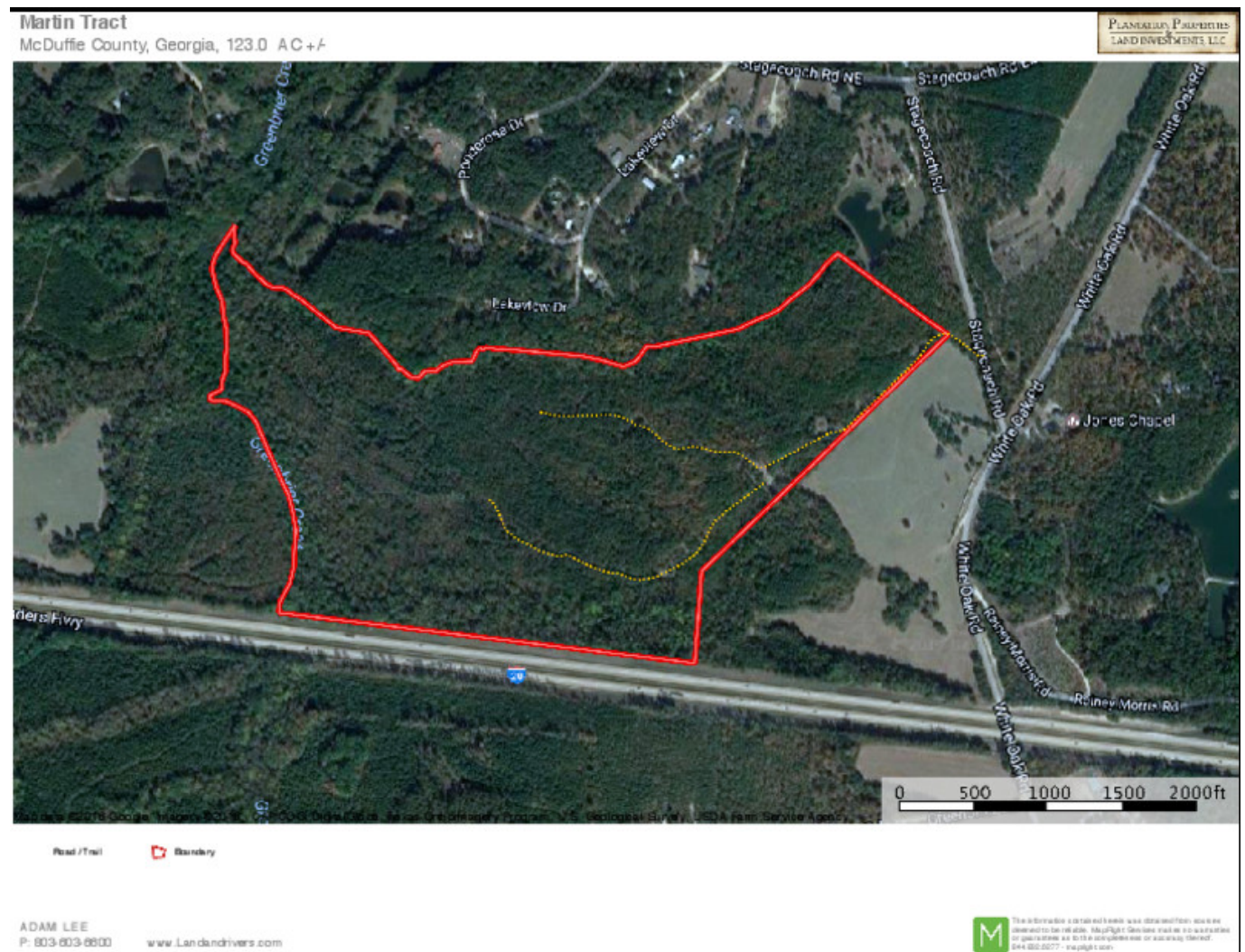
Published on Plantation Properties & Land Investments, LLC (<https://www.landandrivers.com>)



Aerial Map

Stagecoach Rd

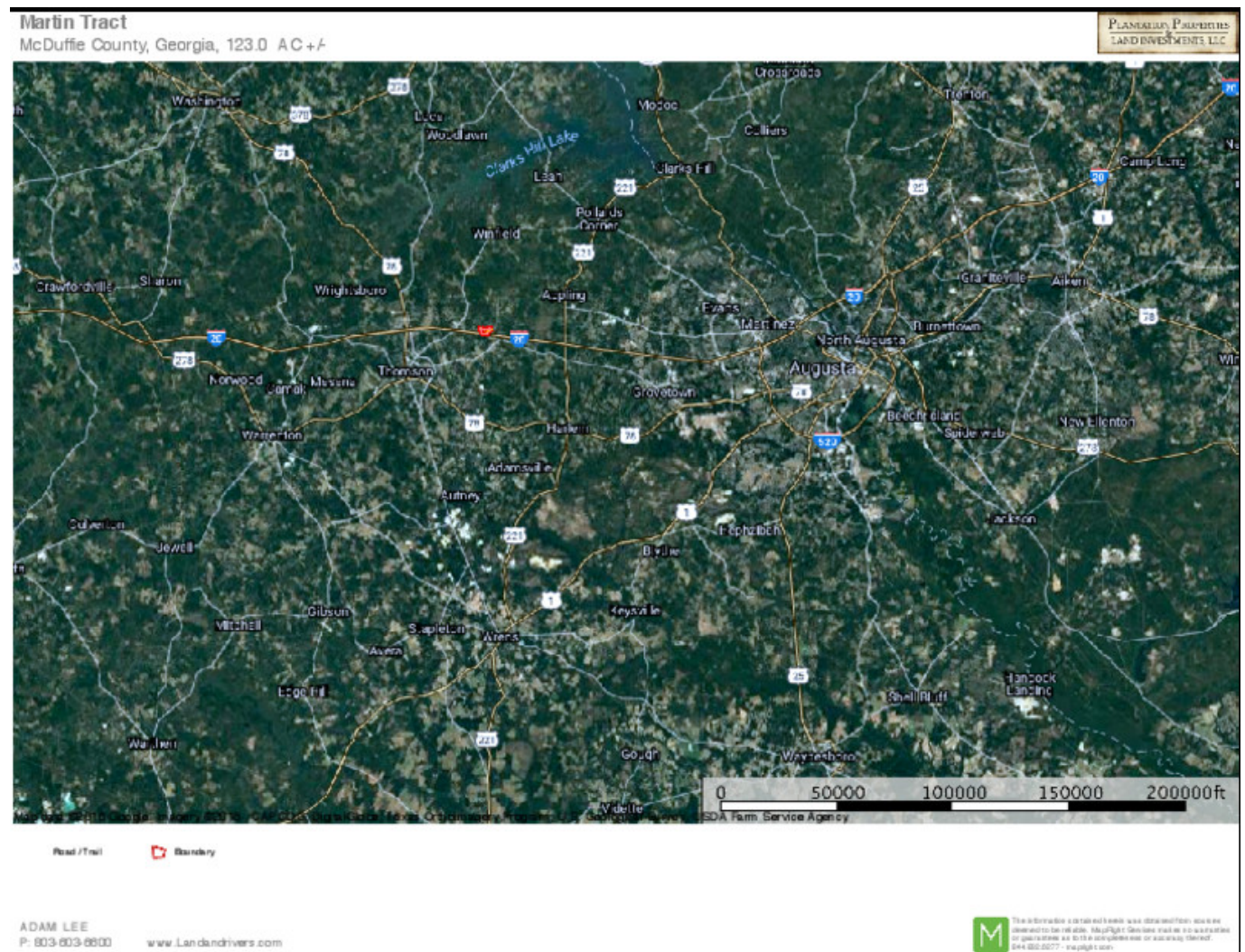
Published on Plantation Properties & Land Investments, LLC (<https://www.landanddrivers.com>)



Location Map

Stagecoach Rd

Published on Plantation Properties & Land Investments, LLC (<https://www.landanddrivers.com>)



Source URL: <https://www.landanddrivers.com/property/stagecoach-rd>