

Roberts Farm - Tract D

Published on Plantation Properties & Land Investments, LLC (<https://www.landandrivers.com>)



Roberts Farm - Tract D

PRICE REDUCED!!! Roberts Farm is a 46± acre property located near the Bulloch/Candler County line. The property has dirt road frontage along Grady Saunders Rd in Portal, GA. It features 20± acres of cultivated land and the remaining 26± acres is wooded. This tract would be the perfect home site, weekend getaway, or hunting retreat in the country. Enjoy farming and hunting on your own land! Located only 1 hour from Savannah, 1.5hrs from Augusta and 2 hours from Macon. Call today for more information or to view this great property. 912.764.5263



Price: \$138,000

Property Type: Land

Status: Sold

Street/Address: Grady Saunders Rd

City: Portal

State: Georgia

Zip code: 30450

County: bulloch

Acreage: 46

Per Acre Price: \$3,000.00

Phone Number: 912-764-5263 (LAND)

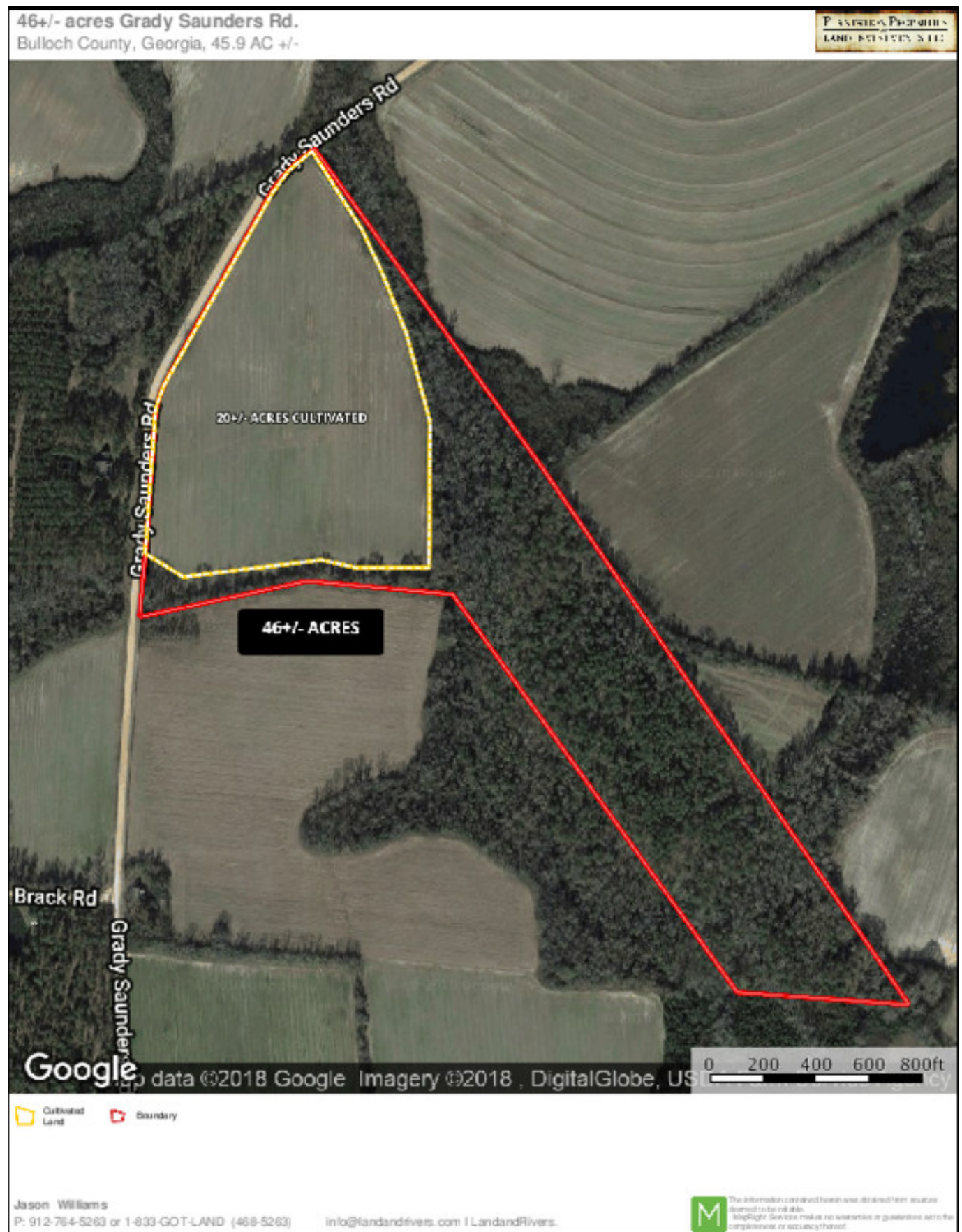
Email: info@LandandRivers.com

Google Maps link: [View Larger Map](#)

Aerial Map

Roberts Farm - Tract D

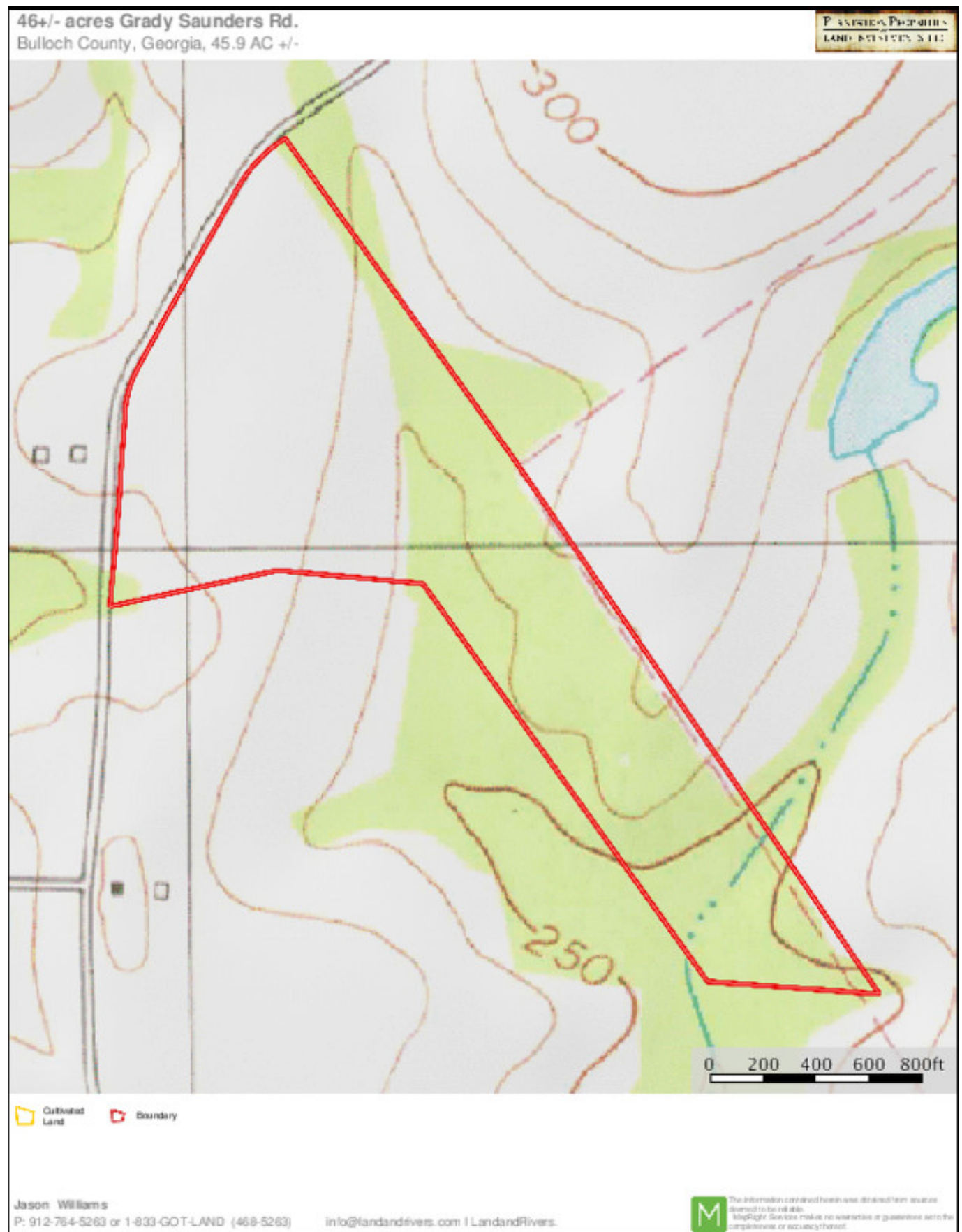
Published on Plantation Properties & Land Investments, LLC (<https://www.landandrivers.com>)



TOPO

Roberts Farm - Tract D

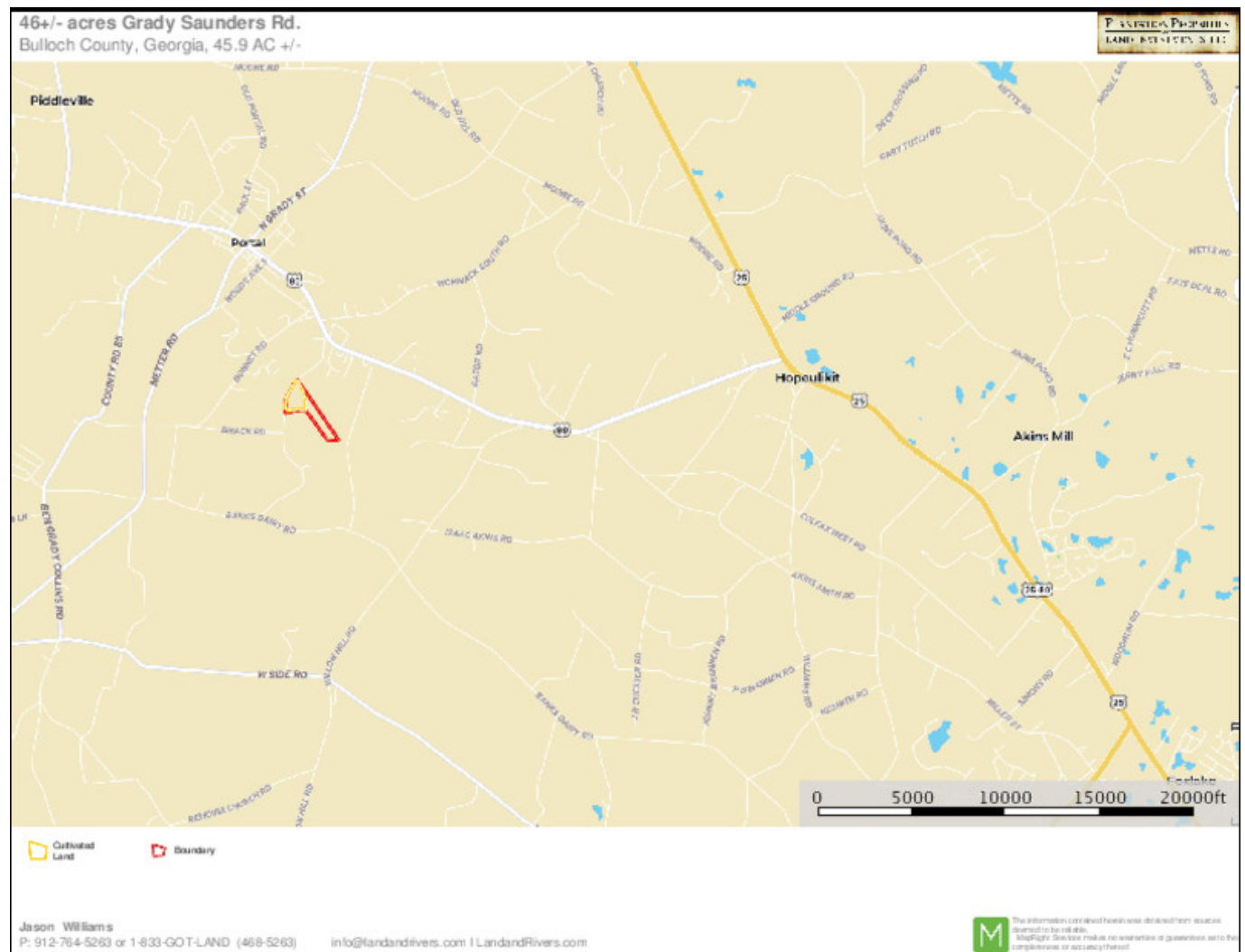
Published on Plantation Properties & Land Investments, LLC (<https://www.landandrivers.com>)



Location Map

Roberts Farm - Tract D

Published on Plantation Properties & Land Investments, LLC (<https://www.landandrivers.com>)



Source URL: <https://www.landandrivers.com/property/roberts-farm-tract-d>